

# ATRO

## Parts Guide

# Freightliner

Cab & Underhood  
Carrier Bearings  
High Temp Mounts  
Steer King  
Suspension  
Torque Rods



**ATRO Parts. Performance that drives your success.**

ATRO, LLC | 6 Bolte Lane | St. Clair, MO 63077 USA | Phone (800) 325-6114

[www.atrobushing.com](http://www.atrobushing.com)

© 2024 ATRO, LLC

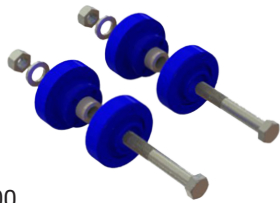
# Cab and Underhood

## CM46-61001

### Cab Mount Kit

**Contains:**

- (2) CM46-61890
- (2) CM46-61891
- (2) 3/4" x 5" Grade 8 Hex Head Bolts
- (2) 3/4" Flat Washers
- (2) 3/4" Locknuts



**Freightliner:** 681-891-00-01, 18-43636-000, 681-890-00-01

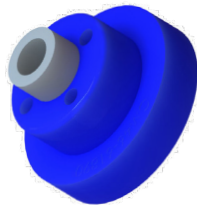
## CM46-61890

### Cab Mount (Upper)

**OD:** 3.3"

**H:** 2.6"

**Freightliner:** 681-890-00-01



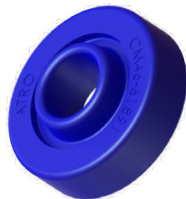
## CM46-61891

### Cab Mount, Lower

**ID:** 1.25"

**OD:** 3.8"

**Freightliner:** 681-891-00-01, 18-43637-000



## HM46-64021

### Grill Mount

**MISC:** 1.1/4" Thread

**Freightliner:** 17-13021-000



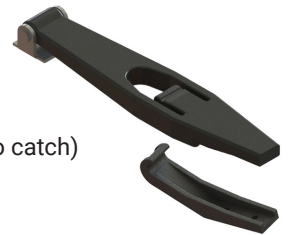
## HL46-64480

### Hood Latch Kit

**Contains:**

- (1) HL46-64434
- (1) HL46-64435

**Freightliner:** 17-12348-000, 17-12434-000 (catch), 17-12438-00 (no catch)



## HL46-64434

### Hood Latch Catch

**L:** 5"

**Freightliner:** 17-12434-000



## HL46-64435

### Hood Latch

**L:** 11 1/4"

**Freightliner:** 17-12435-000



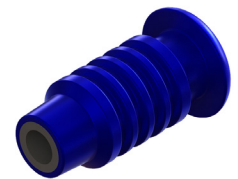
## HM46-64975

### Hood Hinge Bushing

**ID:** .5"

**L:** 3"

**Freightliner:** A17-13975-000



| ATRO Part # | Part Description                     | Cross Reference                          |
|-------------|--------------------------------------|------------------------------------------|
| CM46-61384  | Cab Mount Assembly                   | A1840099000, 18-45384-000                |
| CM46-61769  | Cab Mount Bushing                    | 18-42727-000, 18-34678-000, 18-41005-000 |
| CM46-61891  | Cab Mount, Lower                     | 18-43637-000, 681-891-00-01              |
| CM46-61922  | Cab Mount Bushing & Bracket Assembly | 18-59922-000                             |
| CM94-61875  | Cab Mount (Front)                    | LOR CB2204 146                           |
| HL46-64530  | Hood Latch Kit, Left                 | A17-15553-000                            |
| HL46-64531  | Hood Latch Kit, Right                | A17-15553-001                            |
| HL46-64650  | Hood Latch Kit, Left                 | 17-12435-000, 17-12434-000               |
| HL46-64651  | Hood Latch Kit, Right                | 17-12435-001, 17-12434-001H              |
| HM46-64177  | Hood Bumper                          | J11729 177                               |
| HM46-64877  | Hood Bumper                          | 17-13877-000                             |
| HM94-64438  | Hood Mount                           | 67009-3438                               |

## CR00-67661

### Carrier Bearing Assembly, Self-Aligning

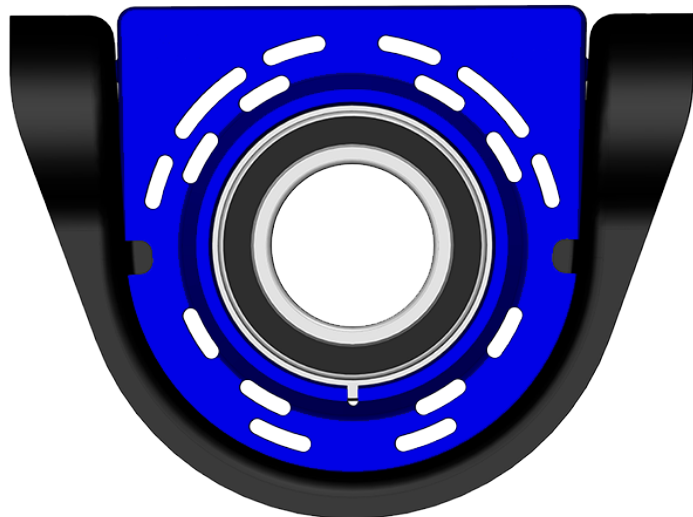
**Bearing Angular Allowance: +/-10 degrees**  
**Series 1810**

**Assembly:**

**Height:** 7-5/8"  
**Width:** 3-3/4"  
**Length:** 10"

**Bearing:**

**Bearing ID:** 60mm  
**Center Height:** 3-3/8"  
**Bolt Holes:** 8 5/8" c-c  
**Bolt Size:** 1/2"



**Dana-Spicer:** 10094142

**Meritor:** CB210661-1XSA

## Features & Benefits

**Polyurethane**

- Chemically Resistant
- Vibration Absorbing

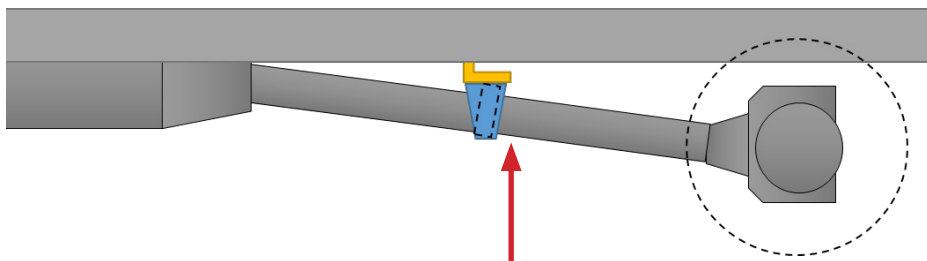
**Patented Pivoting Bearing**

- ± 10° of Articulation
- Sealed
  - Prevents Contamination
  - Retains Lubricant

**Heavy Duty Steel Housing**

- 7 Gauge Steel

## Importance of the Self-Aligning Feature



With the ATRO self-aligning carrier bearing assembly, there is no need to shim because the center is allowed to pivot + or - 10 degrees.\*

This saves money and time on the installation ... less parts plus no need to be as precise due to the range of articulation provided by the new carrier bearing.

\* Proper driveline angle must be maintained.

## CR00-67825

### Carrier Bearing Assembly

**Series 1810**

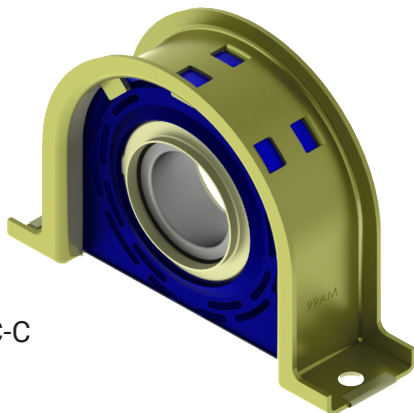
**Assembly:**

**Height:** 7 1/4"  
**Width:** 3"  
**Length:** 10"

**Bearing:**

**Bearing ID:** 60mm  
**Center Height:** 3 1/4"  
**Bolt Holes:** 8 5/8" C-C  
**Bolt Size:** 1/2"

**Dana-Spicer:** 210661-1X



## CR00-67121

### Carrier Bearing Assembly

**Series 1710**

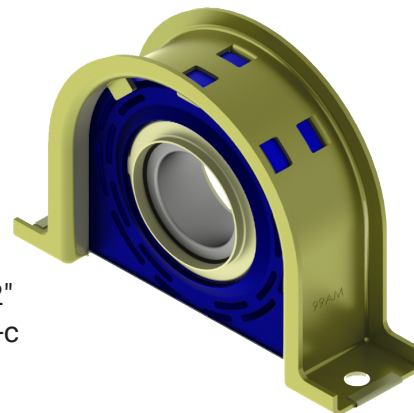
**Assembly:**

**Height:** 9 1/4"  
**Width:** 2 1/4"  
**Length:** 10"

**Bearing:**

**Bearing ID:** 50mm  
**Center Height:** 2 25/32"  
**Bolt Holes:** 7 5/8" c-c  
**Bolt Size:** 1/2"

**Dana-Spicer:** 210121-1X



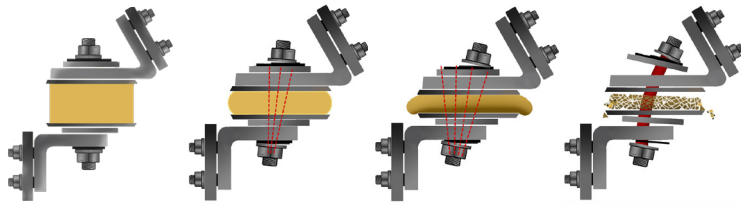
# High Temp Mounts

## Why use ATRO's High Temp Engine Mounts?

EGR/SCR Systems increase underhood temperatures.

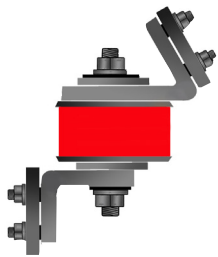
## ATRO's High Temp Polyurethane is the ONLY solution in the Industry for Underhood conditions.

Watch what happens when a standard engine mount is exposed to excessive heat.



### ATRO's High Temp Polyurethane benefits:

- Tested at 300 degrees continuous temperature
- Higher tensile strength
- Improved vibration isolation
- Resistant to chemical attack



### ATRO's High Temperature Engine Mount Line for heavy duty vehicles

ATRO developed polymers that withstand extreme heat in the 300°F range and have replaced the rubber or polyurethane materials that can fail at 200°F. ATRO's material maintains its physical properties throughout the load, heat and stress.

## Many ATRO's Parts are available in Kits!

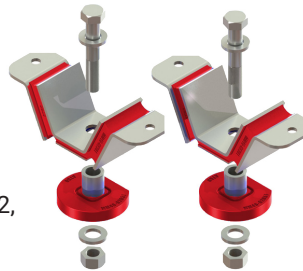
### MM46-62000-HT

#### Engine Mount Kit (Rear), HT

**Contains:**

- (2) MM46-62051-HT
- (2) MM46-62301-HT
- (2) Bolts - 3/4"-16 x 4.5" Grade 8
- (4) Washers
- (2) Locknuts

**Freightliner:** BCD 27330 1, BCD 27330 2, BCD 28805 1



### MM46-62002-HT

#### Engine Mount Kit, Front, HT

**Contains:**

- (1) MM46-62451-HT
- (1) MM46-62651-HT

**Freightliner:** BCD 26704-1, BCD 27651 1, BCD 27651 2, BCD 27651 3, BCD 289451



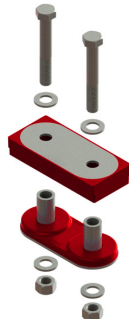
### MM46-62004-HT

#### Engine Mount Kit w/Hardware (Front), HT

**Contains:**

- (1) MM46-62660-HT
- (1) MM46-62721-HT
- (2) 3/4" Bolts
- (2) 3/4" Locknuts
- (4) 3/4" Flat Washers

**Freightliner:** J21246-60, J21247-21, LOR J21246 60, LOR J21247 21



### MM46-62005-HT

#### Engine Mount Kit w/Hardware (Front), HT

**Contains:**

- (1) MM46-62451-HT
- (1) MM46-62651-HT
- (2) BOLT, 3/4"-16 X 4 1/2", GR 8
- (2) 3/4" Locknuts
- (4) 3/4" Flat Washers

**Freightliner:** BCD 26704-1, BCD 276511, BCD 27651 2, BCD 27651 3, BCD 28945-1



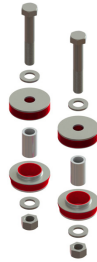
## MM46-62006-HT

### Engine Mount Kit w/Hardware (Front), HT

**Contains:**

- (2) MM46-62003-HT
- (2) Spacer Sleeve
- (2) Bolts
- (2) Locknuts
- (4) Flat Washers

**Freightliner:** 01-15047-000, LOR SSB33 1001 7, LOR SSB33 1001 8, SSB3310017, SSB3310018, 13371-45



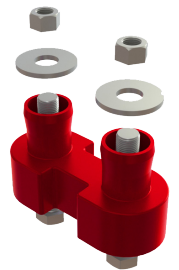
## MM46-62417-HT

### Engine Mount Kit (Rear), w/Hardware, HT

**Contains:**

- (1) MM46-62416-HT
- (2) 5/8" Bolts
- (2) 5/8" Locknuts
- (2) Washers

**Freightliner:** J209413, J20941 36, J209414, J209415120, J2094167, LOR J20941 7, LOR J2094416



| ATRO Part #   | Part Description                        | Cross Reference                                     |
|---------------|-----------------------------------------|-----------------------------------------------------|
| MM46-62051-HT | Engine Mount, Lower (Rear), HT          | BCD28805 1                                          |
| MM46-62120-HT | Motor Mount, (Upper) HT                 | J20120 14                                           |
| MM46-62222-HT | Engine Mount, HT                        | CB1122 2                                            |
| MM46-62301-HT | Engine Mount, Upper (Rear), HT          | BCD27330 1                                          |
| MM46-62416-HT | Engine Mount (Rear), HT                 | J20941 13, J20941 36, J20941 4, J20941 5, J20941 67 |
| MM46-62418-HT | Engine Mount Kit (Rear), w/Hardware, HT | Kit - (2) MM46-62417-HT                             |
| MM46-62451-HT | Engine Mount, Lower (Front), HT         | BCD28945 1                                          |
| MM46-62613-HT | Engine Mount Kit (Front), HT            | J21246 13                                           |
| MM46-62650-HT | Engine Mount, HT                        | CBA24 650 50A                                       |
| MM46-62651-HT | Engine Mount, Upper (Front), HT         | BCD27651 1, BCD27651 2                              |
| MM46-62660-HT | Engine Mount, Upper (Front), HT         | J21246 60                                           |
| MM46-62721-HT | Engine Mount, Lower (Front), HT         | J21247 21                                           |
| MM46-62948-HT | Engine Mount, Lower, HT                 | A17-13975-000                                       |
| MS46-66791-HT | Engine Mount, HT                        | LOR J19791 1                                        |

## EM46-69100-HT

### Exhaust Mount, HT

- ID:** .397"  
**OD:** Large 1.25"  
           Small .95"  
**LG:** 1.44"

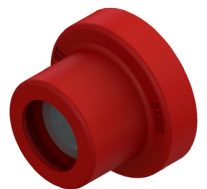


**Freightliner:** CBA12 100

## EM46-69212-HT

### Exhaust Mount, HT

- ID:** .5"  
**OD:** Large 1.75"  
           Small 1.25"  
**LG:** 1.25"

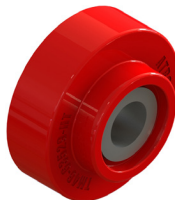


**Freightliner:** CB1121 2

## TM46-63529-HT

### Transmission Mount, Auxiliary, HT

- ID:** .938"  
**OD:** Large 3.5"  
           Small 2.22"  
**H:** 1.625"



**Freightliner:** CBC 35 2 9

## TM46-63664-HT

### Transmission Mount, Auxiliary, HT

- ID:** .532"  
**OD:** Large 1.938"  
           Small 1.33"  
**H:** .94"



**Freightliner:** J6256 64

| ATRO Part # | Part Description           | Cross Reference                       |
|-------------|----------------------------|---------------------------------------|
| MS46-69123  | Insulator, Sandwich Mount* | J11729 123                            |
| MS46-69300  | Radiator Isolator*         | CBA20300                              |
| RM46-63273  | Radiator Mount*            | CB2202 73                             |
| RM46-63471  | Radiator Isolator*         | BCD 28721-1, BCD 28847-1, BCD 28721 1 |

\* Not available in High Temp Polyurethane Formula

# STEER KING™

**The highest-quality king pin repair kits for heavy-duty trucks.**

Our kits include precision machined parts for a true fit and long-lasting performance.



## No-Ream Steel Spiral Kits

- Easy install.
- Maximum wear resistance.
- Three-year warranty.



## No-Ream Bronze Kits

- More grease.
- Longer life.
- Two-year warranty.

Bronze Bushing and Seal Driver Tool



**Scan the QR Code to learn the benefits of using Steer King. Premium No-Ream King Pin Repair Kits.**

Steer King stands apart with the highest quality king pin repair kits on the market. We make our parts better with close tolerance machining, inspection of critical dimensions, and a proprietary manufacturing process. We make installation faster and easier with our kit box and tray, pre-packed bearings, bi-directional lip seals, grease grooves on all king pins, and spare parts when you need 'em.

**Steer King. Better engineering saves time and cost with every installation.**

| ATRO Part # | Kit Type     | Pin Type | King Pin Dimensions | Spindle Bore Dimensions | Axle Bore Dimensions | Bushing & Seal Driver | Cross Reference                  |
|-------------|--------------|----------|---------------------|-------------------------|----------------------|-----------------------|----------------------------------|
| SKB01999    | Bronze       | B        | 1.771 x 9.23        | 2.045/2.047             | 1.772/1.774          | SKPT120A              | 6073300019K, 6073300619          |
| SKS01999    | Steel Spiral | B        | 1.771 x 9.23        | 2.045/2.047             | 1.772/1.774          | SKPT120A              | 6073300019K, 6073300619          |
| SKB12001    | Bronze       | B        | 1.771 x 9.23        | 2.045/2.047             | 1.772/1.774          | SKPT120A              | K120A, R200321, R201330, R202037 |
| SKS12001    | Steel Spiral | B        | 1.771 x 9.23        | 2.045/2.047             | 1.772/1.774          | SKPT120A              | K120A, R200321, R201330, R202037 |
| SKB12101    | Bronze       | B        | 1.771 x 9.23        | 2.045/2.047             | 1.772/1.774          | SKPT120A              | K121A                            |
| SKS12101    | Steel Spiral | B        | 1.771 x 9.23        | 2.045/2.047             | 1.772/1.774          | SKPT120A              | K121A                            |
| SKB14705    | Bronze       | C        | 1.872 x 9.05        | 2.057/2.058             | 1.873/1.875          | SKPT147E              | K147E, 50.147.05, 70.147.05      |
| SKS14705    | Steel Spiral | C        | 1.872 x 9.05        | 2.057/2.058             | 1.873/1.875          | SKPT147E              | K147E, 50.147.05, 70.147.05      |
| SKB96112    | Bronze       | B        | 1.794 x 10.40       | 1.919/1.921             | 1.795/1.797          | SKPT122E              | K961L, 50.961.12, 70.961.12      |
| SKS96112    | Steel Spiral | B        | 1.794 x 10.40       | 1.919/1.921             | 1.795/1.797          | SKPT122E              | K961L, 50.961.12, 70.961.12      |
| SKB98118    | Bronze       | B        | 1.794 x 8.87        | 1.920/1.921             | 1.795/1.797          | SKPT122E              | K981R, 50.981.18, 70.981.18      |
| SKS98118    | Steel Spiral | B        | 1.794 x 8.87        | 1.920/1.921             | 1.795/1.797          | SKPT122E              | K981R, 50.981.18, 70.981.18      |

## PB46-26268

### Pivot Bushing, Anti-Walk

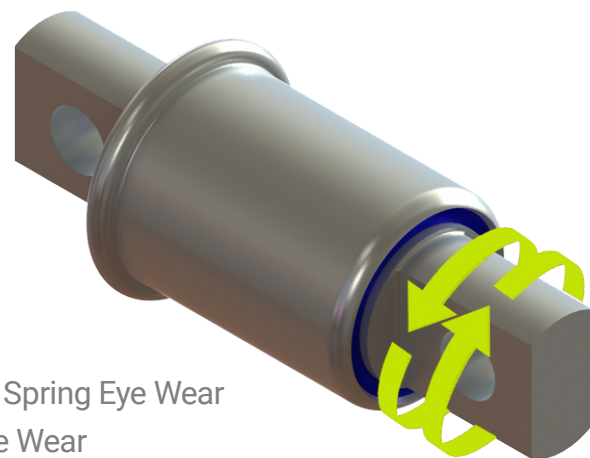
**OD:** 2 1/2"

**BOLT:** 3/4", 5 21/32" c-c

**Qty Per Vehicle:** 4

**Freightliner:** 16-13962-000, 16-16412-000,  
16-18035-000, 681-325-01-50, 681-325-02-50

- Fixed pin rubber bushing rotates in the leaf spring eye > Causes Spring Eye Wear
- ATRO Pin rotates Higher tensile strength > Eliminates Spring Eye Wear
- Inbound flange prevents bushing walkout



## LP46-19773

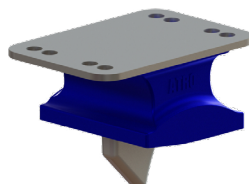
### Spring Pad

**H:** 3 1/8"

**WD:** 5 1/4"

**LG:** 7 9/16"

**Freightliner:** A1615303000,  
A1615773000



## LP46-24581

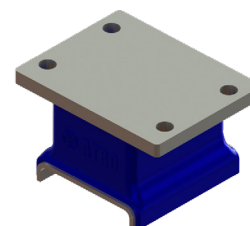
### Spring Insulator Pad, Upper

**H:** 3 1/8"

**WD:** 5 1/8"

**LG:** 7 9/16"

**Freightliner:** 11-19581-000



| ATRO Part # | Part Description            | Cross Reference |
|-------------|-----------------------------|-----------------|
| LP46-24807  | Spring Insulator Pad, Lower | 11-20807-000    |
| LP46-24808  | Spring Insulator Pad, Upper | 11-20808-000    |

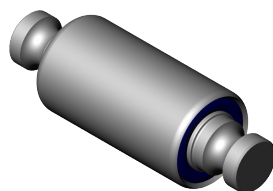
## SP46-11023

### Spring Eye Bushing

**OD:** 2 1/4"

**LG:** 6.70"

**Freightliner:** 16-14603-000,  
16-17770-000, 16-18023-000,  
16-17194-000, 16-21919-000



## SP46-52800

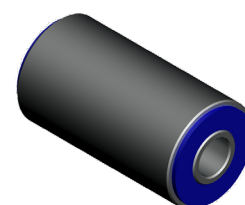
### Spring Eye Bushing

**ID:** 20mm

**OD:** 2 1/4"

**LG:** 4"

**Freightliner:** A6803220150  
680-322-01-50, 16-17769-000



| ATRO Part # | Part Description       | Cross Reference                                                                                      |
|-------------|------------------------|------------------------------------------------------------------------------------------------------|
| MS46-19215  | Bump Stop, Front Axle  | 16-15215-000                                                                                         |
| SK46-10000  | Spring Eye Shackle Kit | 16-11890-001, 16-12373-000, 16-13470-000, 16-12302-000, 16-12399-000,<br>A16-12301-000, 16-11890-000 |
| SK46-10800  | Spring Eye Shackle Kit | 680-322-00-20, 680-322-03-01, 680-322-01-05                                                          |
| SK46-10900  | Spring Eye Shackle Kit | 680-322-01-05                                                                                        |
| SK46-11200  | Spring Eye Shackle Kit | 16-12373-000, A16-01005-002, 16-12399-000, 16-13470-000                                              |
| SP46-11373  | Spring Eye Bushing     | 16-12373-000, 16-12399-000, 16-13470-000                                                             |
| SP46-11473  | Spring Eye Bushing     | 16-16473-000                                                                                         |
| SP46-11508  | Spring Eye Bushing     | 16-20508-000, 16-22182-000                                                                           |

# Torque Rods

## TR46-41002

### Torque Rod, Small Eye

**LG:** 24 5/16" c-c

**Bushings:** TS38000/TS38000

**Freightliner:** 16-18972-000, 681-326-72-16



## TR46-41000

### Torque Rod

**LG:** 24 3/16" c-c

**Bushings:**  
TS38000/TS38000

**Freightliner:** 16-15632-000,  
16-16749-002



## TR46-41175

### Torque Rod

**LG:** 23 1/2" c-c

**Bushings:**  
TS38000/TS38000

**Freightliner:** 681-326-27-16



## TR46-41316

### Torque Rod, Small Eye

**LG:** 22 7/8" c-c

**Bushings:**  
TS00-22500/TS00-22500

**Freightliner:** 16-16749-000,  
681-326-6316



## TR46-41716

### Torque Rod, Small Eye

**LG:** 23 15/16" c-c

**Bushings:**  
TS00-22500/TS00-22500

**Freightliner:** 16-15632-01,  
16-18972-001, 16-16749-001, 681 326 67 16



| ATRO Part # | Rod type             | Length        | Bushings               | Cross Reference                                        |
|-------------|----------------------|---------------|------------------------|--------------------------------------------------------|
| TR46-41003  | Small Eye Torque Rod | 20 1/4" c-c   | TS00-22500/ TS00-22500 | 16-16749-003                                           |
| TR46-41016  | Large Eye Torque Rod | 24 7/16" c-c  | TS38000/TT38000        | 680-326-00-16                                          |
| TR46-41053  | Small Eye Torque Rod | 16 3/8" c-c   | TS00-22500/TS00-22500  | 16-03053-000, 16-19568-000, 16-13053-000, 16-19505-000 |
| TR46-41351  | Small Eye Torque Rod | 16 1/8" c-c   | TS00-22500/TS00-22500  | 16-16141-000, 16-19351-000                             |
| TR46-41972  | Small Eye Torque Rod | 23 13/16" c-c | TS00-22500/TS00-22500  | 16-15632-001                                           |
| TR46-43016  | Small Eye Torque Rod | 16 5/8" c-c   | TS00-22500/TS00-22500  | 681-626-6016, 16-19505-000                             |
| TR46-46002  | Twist Torque Rod     | 24 7/16" c-c  | TS38000/TT38000        | 16-14149-002                                           |
| TR46-46003  | Twist Torque Rod     | 24 7/16" c-c  | TS38000/TT38000        | 16-14149-003                                           |
| TR46-46016  | Small Eye Torque Rod | 17" c-c       | TS00-22500/TH00-22500  | 681-326-00-16                                          |
| TR46-49002  | Large Eye Torque Rod | 23 1/4" c-c   | TS46-22300/TS46-22300  | 16-15002-001, 16-15002-000                             |
| TR46-49004  | Large Eye Torque Rod | 26 3/8" c-c   | TS46-22300/TS46-22300  | 16-15004-001, 16-15004-000                             |
| TR46-49998  | Large Eye Torque Rod | 24 7/16" c-c  | TS46-22300/TS46-22300  | 16-14998-001, 16-14998-000                             |
| TR94-41458  | Large Eye Torque Rod | 22 3/8" c-c   | TS38000/TS38000        | 35801-3458                                             |
| TR94-41514  | Large Eye Torque Rod | 22 1/2" c-c   | TH99-22101/TH99-22101  | 35801-3514, IPC947-271                                 |



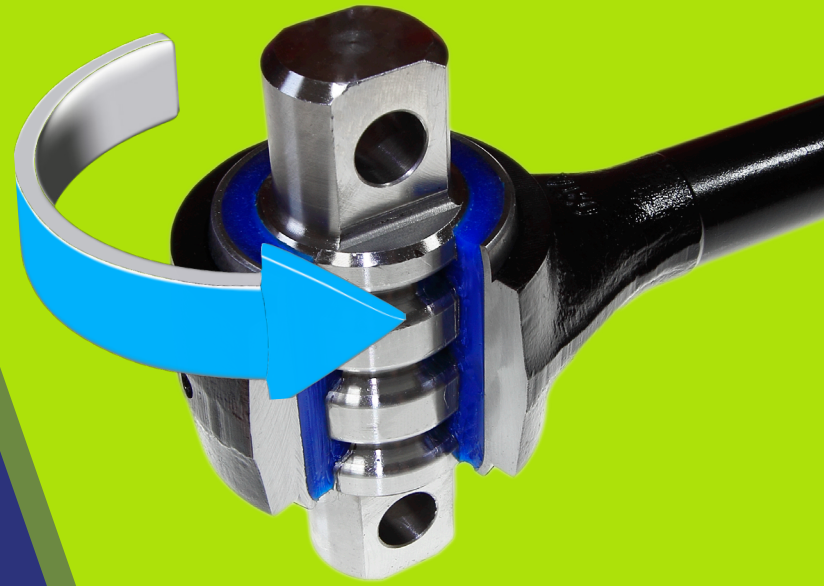
## ATRO's Rotating Pin Torque Rod Bushing

**Better engineering. Faster, simpler installation.**

ATRO's innovative torque rods have rotating pins with custom engineered polyurethane bushings. They install easier and last longer than competitor parts. No dry out, no corrosion, no wind up.

**ATRO parts outperform rubber parts by 3-5 times.**

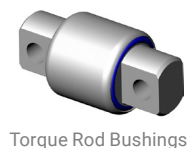
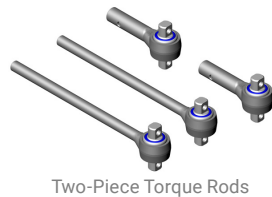
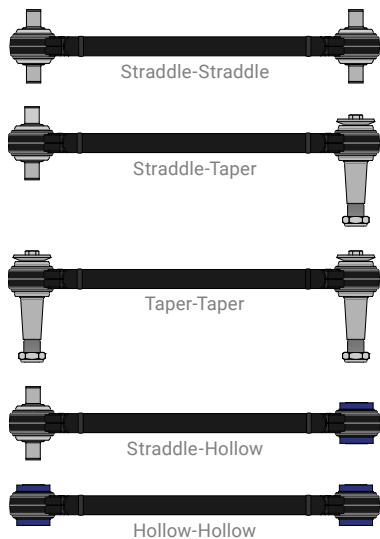
- ATRO polyurethanes are 3-5 times stronger than rubber.
- Resistant to oils, grease, road salt, and other chemicals.
- Specific compounds optimize the performance of each part.



The ATRO torque rod pin can rotate a full 360° and adjust to any clocking angle for fast, easy installation.



Find the rod you need fast with ATRO's Torque Rod Finder.



Save time and cost with ATRO Torque Rods.

- Less inventory: one rod fits any clocking angle.
- Eliminates bushing wind up (typical with rubber).
- Reduces stress on the ENTIRE suspension.
- Longer life reduces customer's operating costs.

**Available configurations:**

- Large-Eye Torque Rods
- Small-eye Torque Rods
- Two-Piece Torque Rods
- V-Rods
- Custom Rods



# Suspension Schematics

## Freightliner FAS II

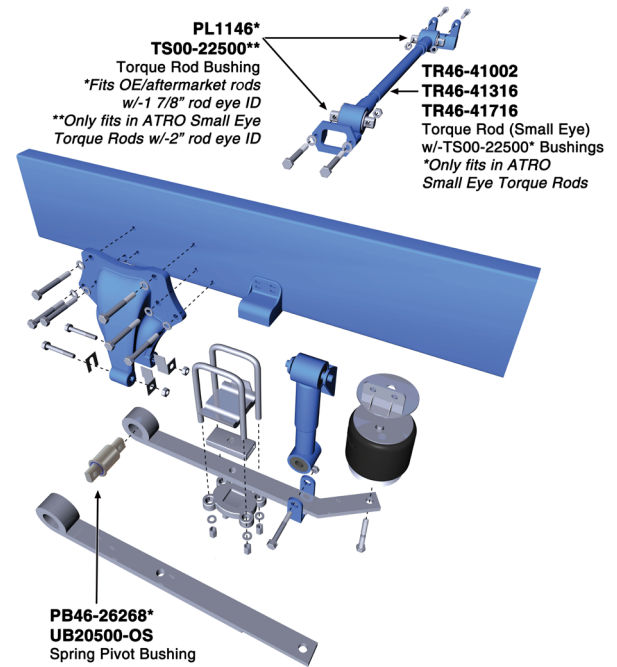
- Popular in over-the-road applications
- Designed to cushion load and reduce sway in turns
- Features an underslung parabolic leaf spring trailing arm

### ATRO Spring Pin Solution (PB46-26268; UB20500-OS)

- Rotating pin design with flanged outer sleeve limits travel
- Revolving inner pin eliminates bushing wind-up
- Oversized version available (UB20500-OS)

### ATRO Torque Rods

- ATRO offers complete replacement rods for the three different length options
  - TR46-41716 (23 15/16")
  - TR46-41316 (22 7/8")
  - TR46-41002 (24 5/16")



## Freightliner TufTrac

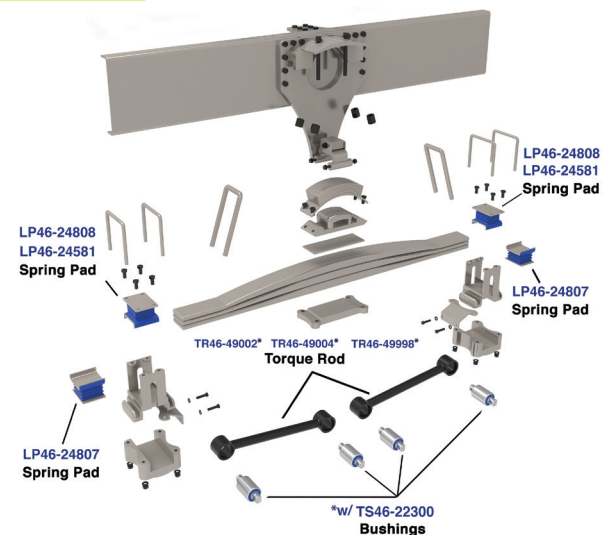
- Popular in vocational and high-center-of-gravity applications
- Designed to smooth out ride, reduce noise and vibration, and provide ground clearance
- Features parabolic springs with elastomeric load cushions.

### ATRO Spring End Pad Solutions

- Proprietary polyurethane resists compression set while absorbing shock and dampening vibration.
  - LP46-24808 – upper pad, 40k suspension
  - LP46-24581 – upper pad, 46k suspension
  - LP46-24807 – lower pad, used on both 40k & 46k suspension

### Atro Torque Rods

- Atro offers complete replacement rods for the three different length options
  - TR46-49002 – used on 40k suspension with 54" axle spacing
  - TR46-49004 – used on 46-52k suspension with 60" axle spacing
  - TR46-49998 – used on 46-52k suspension with 56" axle spacing



**ATRO**  
Field Manual  
Suspensions & Torque Rods

Performance that drives your success.

Featuring sections on:

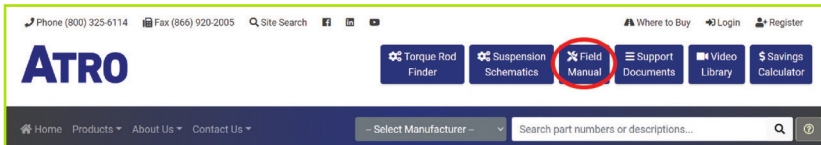
- Suspension Basics
- Air Suspension Inspection/Maintenance
- Leaf Spring Inspection
- Most Common & Preventable Failures
- Truck Rear Suspensions
- Trailer Suspensions
- Torque Rods

Chalmers  
Freightliner  
Hendrickson  
Hatchens  
International  
Kenworth  
Mack  
Meritor  
Neway  
Peterbilt  
Reyco  
Volvo

A valuable preventive maintenance guide from ATRO. To view the digital Field Manual follow the instructions below or scan the QR code to download a copy to your device.

Go to [www.atrobushing.com](http://www.atrobushing.com)

Click on Field Manual in the upper right hand corner



Scan QR Code to download:  
ATRO Field Manual

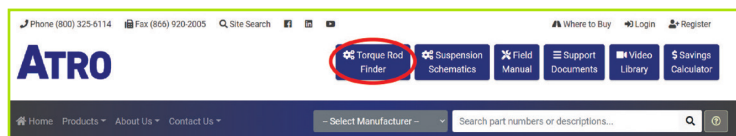


## Torque Rod Finder

ATRO has compiled a master database to simplify and expedite the process of finding replacement rods. Shorten the time at the counter and confirm the right part for your customer.

Go to [www.atrobushing.com](http://www.atrobushing.com)

Click on the Torque Rod Finder in the upper right corner



**1** Visually Identify the Rod  
Select the types of bushings Straddle, Taper or Hollow

1 SELECT STYLE 2 SELECT LENGTH 3 FIND TORQUE ROD

STRADDLE-STRADDLE Select

STRADDLE-TAPER Select

TAPER-TAPER Select

STRADDLE-HOLLOW Select

HOLLOW-HOLLOW Select

### TECH TIP:

Sometimes the field measurement of a rod can be off by a little bit. In the Torque Rod Finder, check the measurements just a little longer or shorter than what you have and often you will find a very popular rod that is exactly what you need! Most suspensions are predictable and use common torque rods!

**2** Measure the Rod  
Measure from center of bushing to center of bushing or outside of one eye to inside of the other eye.

1 SELECT STYLE 2 SELECT LENGTH 3 FIND TORQUE ROD

Configuration: Straddle - Straddle

Filter the C-C length

|              |               |             |               |               |              |               |
|--------------|---------------|-------------|---------------|---------------|--------------|---------------|
| 14 3/16" c-c | 14.31" c-c    | 14 3/8" c-c | 14.41" c-c    | 14 3/4" c-c   | 15 3/16" c-c | 15 3/8" c-c   |
| 15 3/4" c-c  | 15 13/16" c-c | 16 1/8" c-c | 16 1/2" c-c   | 16 9/16" c-c  | 16 5/8" c-c  | 16 15/16" c-c |
| 17 1/8" c-c  | 17 5/16" c-c  | 17 3/8" c-c | 17 15/16" c-c | 18 1/8" c-c   | 18 5/16" c-c | 18.7" c-c     |
| 19 1/16" c-c | 19 1/8" c-c   | 19 1/2" c-c | 19 11/16" c-c | 19 3/4" c-c   | 19 7/8" c-c  | 20" c-c       |
| 20 1/16" c-c | 20 1/4" c-c   | 20.31" c-c  | 20 1/2" c-c   | 20 11/16" c-c | 20 7/8" c-c  | 21" c-c       |

**3** Results found with bushing and bolt hole detail

1 SELECT STYLE 2 SELECT LENGTH 3 FIND TORQUE ROD

Configuration: Straddle - Straddle  
20 1/16" c-c Length

Notes:

C-C

A B

TR50-42510

# ATRO



- ATRO polyurethanes are 3-5 times stronger than rubber.
- Resistant to oils, grease, road salt, and other chemicals.
- Specific compounds optimize the performance of each part.



## Contact Us

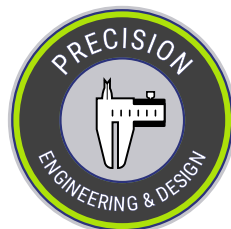
Phone: (800) 325-6114

Fax: (866) 920-2005

Email: [customerservice@atrobushing.com](mailto:customerservice@atrobushing.com)

Website: [www.atrobushing.com](http://www.atrobushing.com)

**ATRO, LLC**  
6 Bolte Lane  
St. Clair, MO 63077 USA



**ATRO Parts. Performance that drives your success.**

ATRO, LLC | 6 Bolte Lane | St. Clair, MO 63077 USA | Phone (800) 325-6114

[www.atrobushing.com](http://www.atrobushing.com)

© 2024 ATRO, LLC