

# ATRO

## Trailer Parts

Bumpers  
Equalizer Bushings & Kits  
5th Wheel Bushings  
Pivot Bushings & Kits  
Suspension  
Torque Rods & Bushings



**ATRO Parts. Performance that drives your success.**

ATRO, LLC | 6 Bolte Lane | St. Clair, MO 63077 USA | Phone (800) 325-6114

[www.atrobushing.com](http://www.atrobushing.com)

© 2024 ATRO, LLC

# Product Testing Trailer Bumpers

## The Bumper Battle: ATRO Poly vs. Rubber

ATRO's polyurethane bumper lasts through 250,000 cycles with minimal wear.

In a rigorous comparative test, under simulated conditions to mimic real-world usage, our team matched ATRO's polyurethane trailer bumper against a standard OEM rubber trailer bumper to assess durability and performance.



BP99-65003 – Trailer Bumper

- ATRO polyurethanes are 3-5 times stronger than rubber.
- Resistant to oils, grease, road salt, and other chemicals.
- Specific compounds optimize the performance of each part.



## Test Procedure

The test involved subjecting the bumpers to repeated impacts against a hardened steel plate designed to accelerate wear at a force of 5,000 lbs. The objective was to evaluate their resilience over time, with failure or the completion of 250,000 cycles as the endpoint.

### Key Findings

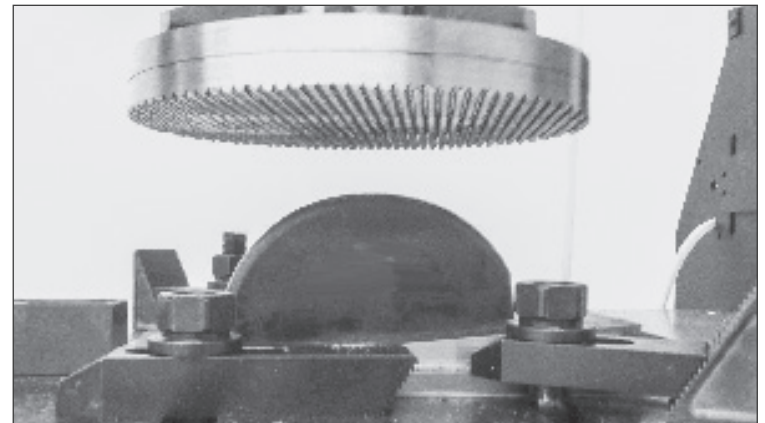
**Durability:** The OEM bumper failed at just 16,520 cycles, as indicated by the test fixture plate impacting the head of the upper mounting bolt. In stark contrast, the ATRO bumper withstood 250,000 cycles without failure.

**Visual Integrity:** Minimal visual damage to the ATRO bumper, indicating resilience under mechanical stress.

### Conclusion

The test proved the superior durability and performance of ATRO's polyurethane trailer bumper over the standard OEM rubber trailer bumper. With the ATRO bumper lasting about 15 times the number of cycles without failure, it presents a compelling case for its use in applications where longevity and reliability are essential. This performance, corroborated by ATRO's success in real-world applications, underscores the advantages of ATRO's polyurethane solutions.

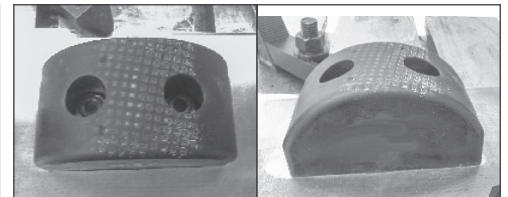
## Test Method



We bolted the bumpers to a machined 5° angle base plate to simulate how trailer bumpers contact a dock—then impacted with a hardened steel plate.



The OEM rubber bumper failed at 16,250 cycles.

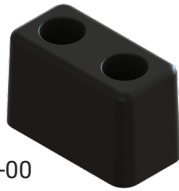


The ATRO polyurethane bumper is fully functional and going strong at 250,000 cycles.

## BP52-34203

### Dock Bumper

H: 3 3/4"  
WD: 3"  
LG: 6"  
BOLT: 1/2", 3" c-c



McNeilus: 120500  
Stoughton: 04-85104-PLY-00

## BP89-65100

### Bumper

H: 3 1/8"  
WD: 2 15/16"  
LG: 5 7/8"  
BOLT: 1/2", 3" c-c



Hyundai: HY 10046289  
Stoughton: 04-86997-001-00

## BP91-34046

### Trailer Door Bumper

ID: 3/8"  
OD: 1 11/16"  
H: 3/8"  
Counterbore ID: 3/4"  
Counterbore Depth: 9/16"



Vanguard National: RDB00004

## BP99-34303

### Trailer Bumper

H: 3 3/8"  
WD: 2 3/4"  
LG: 5 9/16"  
BOLT: 1/2", 2 1/2" c-c

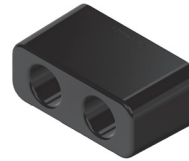


Great Dane: SL3000W  
James King: 3044

## BP99-34312

### Trailer/Dock Bumper

H: 3 1/4"  
WD: 2 1/2"  
LG: 6"  
BOLT: 2.63" c-c



Hyundai: 76007502

## BP99-34408

### Trailer Bumper

H: 2"  
WD: 2"  
LG: 12"  
BOLT: 1/2", 4-1/2" c-c(3)



Fontaine: 50407007

## BP99-34863

### Trailer Door Bumper

ID: .38"  
OD: 1.7"  
LG: 1.12"

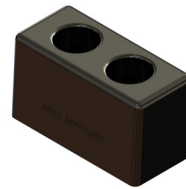


Great Dane: 42500863

## BP99-36037

### Trailer Bumper

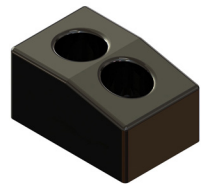
H: 3.3"  
WD: 3"  
LG: 6"  
BOLT: 1/2", 2 1/2" c-c



## BP99-36038

### Trailer Bumper

H: 3.2"  
WD: 4"  
LG: 6.1"  
BOLT: 1/2", 2.4" c-c

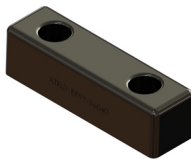


James King: 3043

## BP99-36040

### Trailer Bumper

H: 1 3/4"  
WD: 1 15/16"  
LG: 7"  
BOLT: 3/8", 4 1/2" c-c



Fontaine: B552641  
James King: 3042  
Vanguard National: RDB00002

## BP99-65000

### Trailer Door Bumper

OD: 1 7/8"  
LG: 1 5/8"  
BOLT: 1/2"



Sterling Truck: FTG 022 01085  
Utility Trailer: 3-1250-25

## BP99-65020

### Trailer Bumper

H: 3 1/2"  
WD: 2 5/8"  
LG: 4 5/8"  
BOLT: 7/16", 2 3/8" c-c



James King: 3042  
Utility Trailer: 03-1250-0-214

## BP99-65040

### Trailer/Dock Bumper

H: 3 3/4"  
WD: 3"  
LG: 5 3/4"  
BOLT: 1/2", 3 1/2" c-c

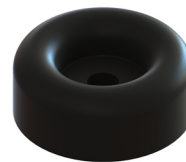


James King: 3630, 3781  
Kentucky Trailer: T-9000  
Tramec: 30027  
Utility Trailer: RDB-003  
Wabash: WAB21400098

## BP99-650B1

### Door Bumper

ID: .45"  
OD: 2 1/2"  
H: 1"



James King: 3050  
Trelleborg: B1

## BP99-65182

### Bumper

H: 3 1/2"  
WD: 2 1/2"  
LG: 6 1/4"  
BOLT: 1/2", 3 3/4" c-c



Benson Trailer: B52641  
Great Dane: 035-25182

# Bumpers

## BP99-65304

### Bumper

**H:** 3 1/2"  
**WD:** 2 3/4"  
**LG:** 5 5/8"  
**BOLT:** 1/2", 2 3/4" c-c

**Great Dane:** 41700301,  
41700304



## MS99-34008

### Trailer/Dock Bumper Pad

**H:** 3 1/2"  
**WD:** 2 5/8"  
**LG:** 4 5/8"  
**BOLT:** 7/16", 2 3/8" c-c

**Great Dane:** 30036, 41700322  
**Tramec:** J21400008

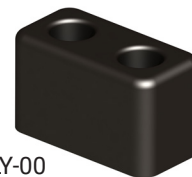


## MS99-65038

### Trailer Bumper

**H:** 3 1/2"  
**WD:** 3"  
**LG:** 6"  
**BOLT:** 1/2", 3" c-c

**McNeilus:** 120500  
**Stoughton:** 04-85104-PLY-00

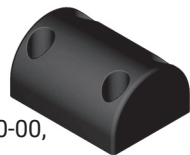


## MS99-65341

### Dock Bumper

**H:** 7 3/8"  
**WD:** 5 1/2"  
**LG:** 3 7/8"  
**BOLT:** 3" x 5 1/4" c-c

**Stoughton:** 04-85341-000-00,  
04-85341-PLY-00  
**Trailmobile:** 700-99-484



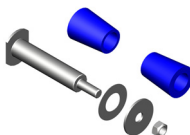
# Equalizer Bushings & Kits

## EQ47-35900

### Equalizer Bushing Kit

**LG:** 11" Bolt  
**OD:** 2" Bolt  
**Contains:**  
 (2) PL1085  
 (1) Equalizer Bolt  
 (2) Washers  
 (1) Locknut

**Fruehauf:** UXA-00004-900  
**Meritor:** R301024

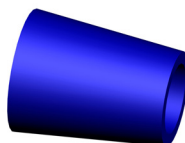


## PL1085

### Equalizer Bushing

**ID:** 2"  
**OD:** 3 1/2" Large  
 2 11/16" Small  
**LG:** 4 3/8"

**Fruehauf:** UXA-00004  
**Meritor:** R307432, R301020

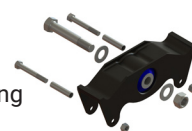


## EQ53-35001

### Cast Equalizer Beam w/Bushing

**LG:** 16 1/2"  
**BOLT:** 1 1/8", 11.5" c-c  
**Contains:**  
 (1) Cast Beam  
 w/EQ53-35601 Bushing  
 (1) 1 1/8" Bolt  
 (1) 1 1/8" Locknut  
 (2) Flat Washers  
 (2) 5/8" Bolts  
 (2) 5/8" Locknuts  
 (2) Spacer Sleeves

**Hutchens:** 16290-01, 17784-01 (No Hardware)



## EQ53-35002

### Cast Equalizer Beam w/Bushing

**LG:** 16 1/2"  
**BOLT:** 1 1/8", 11.5" c-c  
**Contains:**  
 (1) Cast Beam  
 w/EQ53-35601 Bushing

**Hutchens:** 16290-01 (Includes Hardware), 17784-01

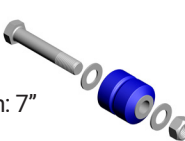


## EQ53-35118

### Equalizer Bushing Kit

**ID:** 1 1/8"  
**OD:** 3 5/16"  
**Contains:**  
 (1) EQ53-35601 Bushing  
 (1) 1 1/8"-7 UNC-2A Length: 7"  
 (1) Locknut  
 (2) Flat Washers

**Hutchens:** H16290-01, H17784-01

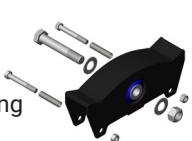


## EQ53-35158

### Equalizer Beam w/Bushing

**LG:** 16 1/2"  
**BOLT:** 1 1/8", 11.75" c-c  
**Contains:**  
 (1) Cast Beam  
 w/EQ53-35601 Bushing  
 (1) 1 1/8" Bolt  
 (1) 1 1/8" Locknut  
 (2) Flat Washers  
 (2) 5/8" Bolts  
 (2) 5/8" Locknuts  
 (2) Spacer Sleeves

**Hutchens:** 16158-01



# Equalizer Bushings & Kits

## EQ53-35158-NH

### Equalizer Beam w/Bushing

**LG:** 16 1/2"  
**BOLT:** 1 1/8", 11.75" c-c  
**Contains:**  
 (1) Cast Beam  
 w/EQ53-35601 Bushing

**Hutchens:** 16158-01

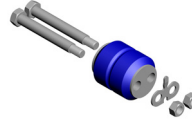


## EQ53-35001

### Equalizer Bushing Kit

**OD:** 3 5/16"  
**Contains:**  
 (1) Equalizer Bushing  
 (2) 3/4" Shoulder Bolts  
 (2) Locknuts  
 (1) Locktab

**Fruehauf:** UCA-0472 (Bushing Only)  
**Hutchens:** 7010-00 (Bushing Only)  
**Meritor:** R301999A (Bushing Only)

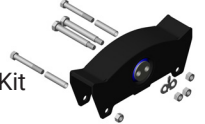


## EQ53-35250

### Equalizer Beam w/Bushing

**LG:** 16 1/4"  
**BOLT:** 3/4", 1 3/8" c-c  
**Contains:**  
 (1) Equalizer Beam  
 (1) EQ53-35234 Bushing Kit  
 (2) 5/8" Bolts  
 (2) Locknuts  
 (2) Spacer Sleeves  
 (2) 3/4" Shoulder Bolt and Nuts W/ Lock Tab

**Hutchens:** 750-03

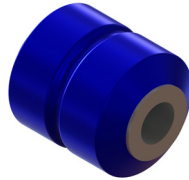


## EQ53-35601

### Equalizer Bushing

**ID:** 1 1/8"  
**OD:** 3 5/16"  
**L:** 3 7/8"

**Hutchens:** 750-03

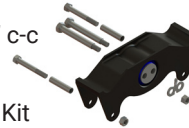


## EQ53-35701

### Cast Equalizer Beam w/Bushing

**LG:** 16"  
**BOLT:** 3/4", 1 3/8" c-c  
**Equalizer Holes:** 11 1/2" c-c  
**Contains:**  
 (1) Equalizer Beam  
 (1) EQ53-35234 Bushing Kit  
 (2) 5/8" Bolts  
 (2) Locknuts  
 (2) Spacer Sleeves  
 (2) 3/4" Shoulder Bolt and Nuts W/ Lock Tab

**Hutchens:** 19137-01, 704-01 (No Hardware)

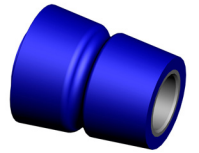


## EQ83-11000

### Equalizer Bushing

**ID:** 1 5/8"  
**OD:** 3 1/2" Large  
 2 3/4" Small  
**LG:** 4 3/8"

**Reyco:** T-5524

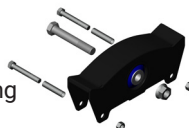


## EQ83-35000

### Equalizer Beam w/Bushing

**LG:** 16 1/2"  
**BOLT:** 1", 11 3/4" c-c  
**Contains:**  
 (1) Equalizer Beam  
 w/EQ83-35902 Bushing  
 (1) 1" Bolt  
 (1) Flanged Locknut  
 (2) 5/8" Bolt  
 (2) 5/8" Locknuts  
 (2) Spacer Sleeves

**Meritor:** R304813 (No Hardware)  
**Reyco:** 0650-00 (No Hardware)



## EQ83-35300

### Equalizer Bushing

**LG:** 18"  
**Bushing Hole:** 3" - 2 5/8" Tapered  
**Contains:**  
 (1) Equalizer Beam  
 (1) Q83-35902 Bushing

**Meritor:** R302846  
**Reyco:** T5427



## EQ83-35855

### Cast Equalizer Beam w/Bushing

**LG:** 16"  
**BOLT:** 1"  
**Contains:**  
 (1) Cast Equalizer Beam  
 (1) EQ83-35902 Bushing  
 (1) 1" Bolt  
 (1) Flanged Locknut  
 (2) 5/8" Bolt  
 (2) 5/8" Locknuts  
 (2) Spacer Sleeves

**Meritor:** R3010250, R304835  
**Reyco:** 0850-00, 0741-00

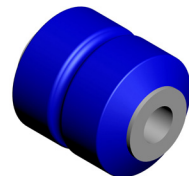


## EQ83-35902

### Equalizer Bushing

**ID:** 1"  
**OD:** 3 5/16"  
**LG:** 4"

**Great Dane:** 0649-02  
**Reyco:** 0649-02



## EQ83-35904

### Equalizer Bushing Kit

**ID:** 1"  
**OD:** 3 5/16"  
**LG:** 4"  
**Contains:**  
 (1) EQ83-35902 Bushing  
 (1) 1"-14UNS-2A Length: 6.5" Grade: 8  
 (1) Flanged Locknut

**Reyco:** K0649-04

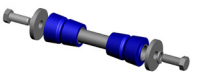


## SK83-31000

### Equalizer Bushing Kit

**ID:** 1 5/8"  
**OD:** 3.5" tapers to 2.75"  
**Contains:**  
 (2) EQ83-11000  
 (1) Equalizer Shaft  
 (2) Equalizer Washers  
 (2) Lock Washers  
 (2) Bolts

**Reyco:** TK18998, T-5524



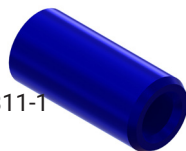
# 5th Wheel Bushings

## FW51-32011

### 5th Wheel Bushing

**ID:** 1 1/8"  
**OD:** 2"  
**LG:** 4 1/4"

**Holland:** XB-0011, RK-12311-1

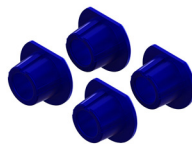


## FW51-32111

### 5th Wheel Bushing Kit - HOLLAND FW17 Gen I

**ID:** 1.563"  
**H:** 2.08"

**Holland:** RK-12311-1

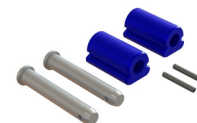


## FW51-32413

### Foot Pin Repair Kit

**LG:** 7" Pin  
**DIA:** 1 1/8" Pin  
**Roll Pin:** 3/8" x 2 3/4"  
**Contains:**  
(2) PL1006  
(2) Pivot Pins  
(2) Roll Pins

**Holland:** RK004413



## FW51-32606

### 5th Wheel Rebuild Kit

**Contains:**  
(4) FW99-32605 Bushings  
(2) Foot Pins 6.85" x 1 1/8"  
(2) Bolts  
(2) Flanged Locknuts

**Holland:** RK-10605



## FW51-32731

### 5th Wheel Rebuild Kit

**Contains:**  
(2) PL1006 Bushings  
(2) Foot Pins  
(2) Bolts  
(2) Flanged Locknuts

**Holland:** RK-06973-1

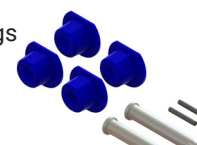


## FW51-32736

### 5th Wheel Rebuild Kit

**Contains:**  
(4) FW99-32605 Bushings  
(2) Bracket Pins  
(2) Spring Pins

**Holland:** RK-11736



## FW99-32109

### 5th Wheel Bushing (set of 2)

**H:** 1.7"  
**WD:** 3.03"  
**LG:** 2 3/4"

**Fontaine:** BSH-109-L, BSH-LWS-L

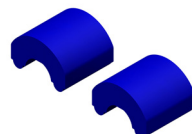


## FW99-32172

### 5th Wheel Bushing (set of 2)

**WD:** 2.65"  
**LG:** 2 3/8"

**Fontaine:** BSH-172-U

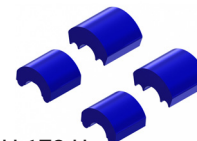


## FW99-32175

### 5th Wheel Rebuild Kit

**Contains:**  
(2) FW99-32109 Lower Bushings  
(2) FW99-32172 Upper Bushings

**Fontaine:** BSH-109-L, BSH-172-U, BSH-LWS-L

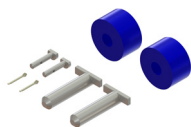


## FW99-32191

### Foot Pin Repair Kit

**Contains:**  
(2) PL1006 Bushings  
(2) T-Pins  
(2) Roll Pins  
(2) Cotter Keys  
(2) Locking Tabs

**Fontaine:** KITPIN191



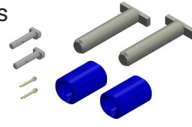
## FW99-32300

### 5th Wheel Bushing Kit

**Contains:**  
(2) FW99-32301 Bushings  
(2) T-Pins  
(2) Pins  
(2) Cotter Pins

**Fontaine:** BSH-3000 (Bushing), KIT-PIN-3000

*Note: Includes corrosion resistant hardware*



## FW99-32301

### 5th Wheel Bushing

**ID:** 1 9/32"  
**OD:** 2 1/8" x 2 3/8" Oval  
**LG:** 3 5/8"

**Fontaine:** BSH-3000

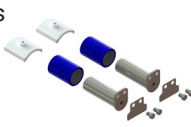


## FW99-32401

### 5th Wheel Bushing Kit

**Contains:**  
(2) FW99-32594 Bushings  
(2) Bracket Pins  
(2) Collars  
(2) Tab Washers  
(4) Bolts

**Jost International:** JSK3105-95 (collar), JSK70202-15 (bolts), JSK73104-47 (tab washer), JSK790111-03 (bracket pin), SK2905-94 (bushing), SK2905-95 (bushing), SK75014-01

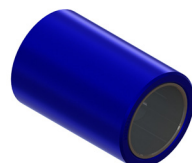


## FW99-32594

### 5th Wheel Bushing

**ID:** 2"  
**OD:** 2 3/4"  
**LG:** 4"

**Jost International:** SK2905-94, SK2905-95

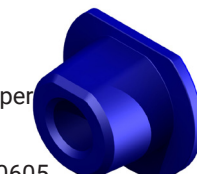


## FW99-32605

### 5th Wheel Bushing

**ID:** 1 3/16"  
**OD:** 3 7/8" Large  
2 9/16" at base,  
2 1/4" at top of taper  
**LG:** 2 1/16"

**Holland:** XB10605, XB-10605



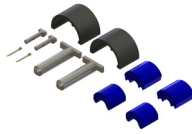
# 5th Wheel Bushings

## FW99-32LLB

### Foot Pin Repair Kit

#### Contains:

- (1) FW99-32109 Bushing
- (1) FW99-32172 Bushing
- (2) Bracket Liners
- (2) T-Bolts
- (2) Key Lock Bolts
- (2) Key Locks



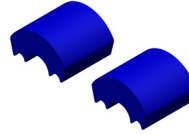
Fontaine: KITPINLLB

## FW99-32109

### 5th Wheel Bushing (set of 2)

ID: 1 1/4"  
OD: 3 15/16"  
WD: 2 1/4"

Fontaine: BSH-150  
Meritor: R307445

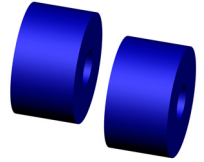


## PL1002

### 5th Wheel Bushing

ID: 1 1/8"  
OD: 2 1/4"  
LG: 4 1/4"

Holland: XB-0011-2  
Meritor: R307450

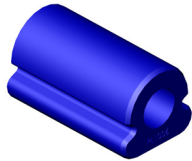


## PL1006

### 5th Wheel Bushing

ID: 1 1/2"  
OD: 2 5/8"  
LG: 4 5/16"

Holland: XB-0012-3

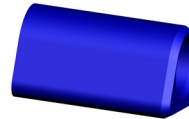


## PL1032

### 5th Wheel Bushing

ID: 1 1/2"  
OD: 2 1/2"  
LG: 4 1/4"

Holland: XA-1604-9

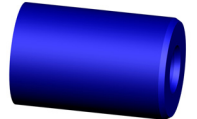


## PL1037

### 5th Wheel Bushing

ID: 1 1/8"  
OD: 2 3/4"  
LG: 4 1/4"

Holland: XB-1604-5

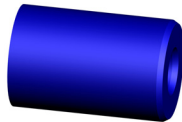


## PL1037

### 5th Wheel Bushing

ID: 1 7/16"  
WD: 2 1/2"  
LG: 4 1/4"

Holland: XB-0012-2



# Pivot Bushings & Kits

## PB00-26422

### Pivot Bushing Kit

#### Contains:

- (2) PB00-36314 Bushings
- (1) Inner Sleeve
- (1) Bolt 3/4" x 5
- (1) Locknut
- (2) Washers



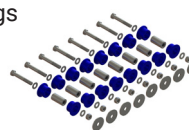
Hendrickson: R005422

## PB00-26839

### Lift Axle Bushing Kit

#### Contains:

- (16) PB00-36314 Bushings
- (8) Inner Sleeves
- (4) Bolts 3/4" x 5"
- (4) Bolts 3/4" x 5-1/2"
- (8) Locknuts
- (16) Washers
- (8) Shim Washers



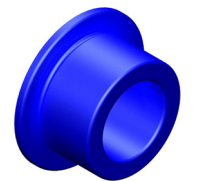
Hendrickson: R008839  
Watson Chalin: SRK1190-1

## PB00-36314

### Flange Bushing

ID: 1 1/2"  
OD: 3" Large  
2 1/4" Small  
LG: 1 1/4" Barrel  
TK: 3/16" Flange

Hendrickson: 4931  
Meritor: 1225-R-1370, A-1225-L-1416  
TransPro: 19204, 19682



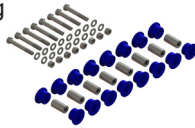
# Pivot Bushings & Kits

## PB50-26391

### Lift Axle Bushing Kit

**Contains:**

- (16) PB00-36314 Bushing
- (8) Inner Sleeves
- (4) Bolts 5"
- (4) Bolts 5.5"
- (8) Locknuts
- (16) Washers
- (8) Shim Washers



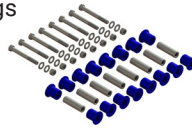
Hendrickson: R008839-1

## PB50-26392

### Lift Axle Bushing Kit

**Contains:**

- (16) PB50-26118 Bushings
- (8) Bolts 7.5"
- (16) Washers
- (8) Nuts
- (8) Sleeves



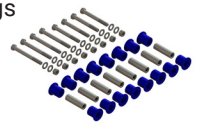
Hendrickson: R008839-2

## PB50-26393

### Lift Axle Bushing Kit

**Contains:**

- (16) PB50-26118 Bushings
- (4) Bolts 7.5"
- (4) Bolts 8.5"
- (16) Washers
- (8) Nuts
- (8) Sleeves



Hendrickson: R008839-3

## PB50-36000

### Pivot Bushing Kit w/Hex Bolt

**ID:** 1 1/4"

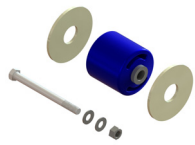
**OD:** 5 7/8"

**LG:** 6 3/4"

**Contains:**

- (1) Pivot Bushing
- (2) Wear Washers
- (2) Flat Washers
- (1) Bolt 7/8"-9"X10" GR8
- (1) Nut

**Install Tool:** PT50-59307



Hendrickson: S-24691

Watson Chalin: 17993112

## PB50-36001

### Pivot Bushing Kit w/Shear Bolt

**ID:** 1 1/4"

**OD:** 5 7/8"

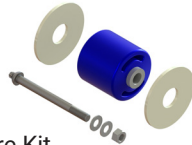
**BOLT:** 7/8"

**LG:** 6 3/4"

**Contains:**

- (1) Pivot Bushing
- (1) HW50-26679 Hardware Kit
- (2) Shims

**Install Tool:** PT50-59307



Hendrickson: S-24691

Meritor: R3010729A

Watson Chalin: 17993112

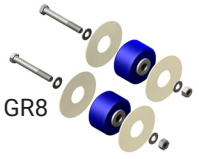
## PB50-36321

### Pivot Bushing Kit, Narrow (Regular Bolt)

**Contains:**

- (2) PB50-36364 Pivot Bushings
- (4) Wear Washers
- (2) 7/8"-9 x 7" Cap Screw GR8
- (2) Locknuts
- (4) Flat Washers

**Install Tool:** PT50-59736



Hendrickson: S-26321

## PB50-36322

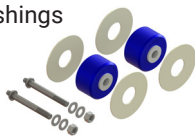
### Pivot Bushing Kit, Narrow (Shear Bolt)

**Contains:**

- (2) PB50-36364 Pivot Bushings
- (4) Wear Washers
- (2) HW50-26705

**Install Tool:** PT50-59736

Hendrickson: S-26321



## PB50-36323

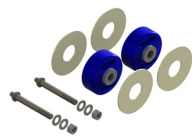
### Pivot Bushing Kit, Multi-Function, Shear Bolt

**Contains:**

- (2) Pivot Bushing
- (2) Shim Washer
- (2) Shear bolt, washers and Nut

**Install Tool:** PT50-59736

Hendrickson: S-26321



## PB50-36324

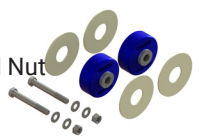
### Pivot Bushing Kit, Multi-Function, Hex Bolt

**Contains:**

- (2) Pivot Bushing
- (2) Shim Washer
- (2) Hex bolt, washers and Nut

**Install Tool:** PT50-59736

Hendrickson: S-26321



## PB50-36654

### Pivot Bushing Kit

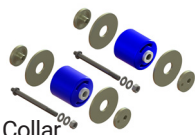
**Contains:**

- (2) PB50-36001 Pivot Bushing w/Shear Bolt
- (2) MS50-26924 Concentric Collar
- (2) MS50-26925 Eccentric Collar
- (2) Wear Shim

**Install Tool:** PT50-59736

Hendrickson: S-28654,

S-24691 (Bushings & Hardware Only)



## MS50-39613

### Wear Washer

**ID:** 2.27"

**OD:** 7"

**TK:** .35"

Hendrickson: B11613, S11613, B-11613, S-11613



## PB50-36364

### Pivot Bushing, Narrow

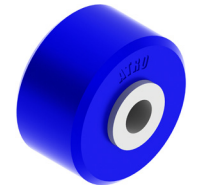
**ID:** 1 1/4"

**OD:** 5 1/2"

**WD:** 3 5/8"

**Install Tool:** PT50-59736

Hendrickson: S-26321





# Pivot Bushings & Kits

## PB50-36914

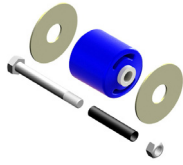
### Pivot Bushing Kit

**ID:** 1 1/4"  
**OD:** 5 7/8"  
**LG:** 6 3/4"

**Contains:**

- (1) Pivot Bushing
- (2) Wear Washers
- (1) Bolt Sleeve
- (1) Bolt
- (1) Locknut

**Install Tool:** PT50-59307



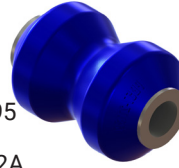
**Hendrickson:** A-6914, S6914

## PB57-21139

### Pivot Bushing

**ID:** 1 1/8"  
**OD:** 3 1/2"  
**LG:** 5 1/4"

**Fruehauf:** MNW900081395  
**Holland:** 90008139  
**Meritor:** R304382A, E4382A  
**Neway:** 900 08 139  
**Watson Chalin:** 10050

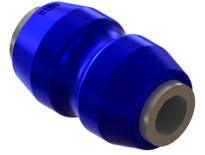


## PB57-21149

### Pivot Bushing

**ID:** 1 1/8"  
**OD:** 2 13/16"  
**LG:** 5"

**Holland:** 90008149  
**Meritor:** E4410A  
**Neway:** 900 08 149  
**Watson Chalin:** 11223

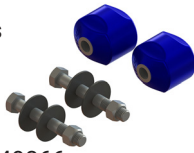


## PB57-25394

### Pivot Bushing Kit (Large)

**Contains:**

- (2) PB57-26247 Bushings
- (2) Bolts 1 1/8"-7 x 8"
- (2) Locknuts 1 1/8"-7
- (4) Washers



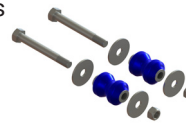
**Holland:** 48100394, 024-49866  
**Neway:** SRK-530, SRK829

## PB57-36200

### Pivot Bushing Kit (set of 2)

**Contains:**

- (2) PB57-21139 Bushings
- (2) Bolts 9 1/2"
- (2) Locknuts
- (4) Wear Washers



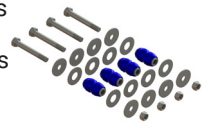
**Holland:** 48100202, SRK145  
**Meritor:** R304398A  
**Neway:** 48100202, SRK01, SRK-145  
**Watson Chalin:** SRK01

## PB57-36300

### Axle Connection Kit

**Contains:**

- (4) PB57-21149 Bushings
- (8) Wear Washers
- (8) Service Wear Washers
- (4) Bolts
- (4) Locknuts



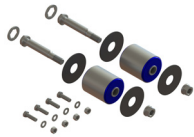
**Holland:** 48100206, SRK-149  
**Meritor:** R304411A  
**Neway:** 48100206, SRK02, SRK-149

## PB85-36029

### Mono-Pivot Bushing Kit

**Contains:**

- (2) PB85-360B0 Pivot Bushings
- (2) Eccentric Bolts
- (2) Anti-turn Washers
- (2) Securelok® Nuts
- (4) Bearing Washers
- (4) Clamp Bolt, 3/4"-10 x 2 1/2"
- (4) Flat Washers
- (4) Locknuts



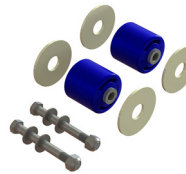
**Ridewell:** 6040028, 6040029

## PB93-36K64

### Pivot Bushing

**Contains:**

- (2) Bushings
- (4) Wear Washers
- (4) Flat Washers
- (2) Bolts
- (2) Locknut



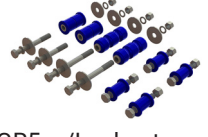
**Watson Chalin:** SRK64

## KT93-25K14

### Pivot Bushing

**Contains:**

- (2) PB93-26931 Bushing
- (2) AS93-27932 Bushing
- (4) PL1118 Bushing
- (8) Flat Washer, 3 1/4"
- (8) Flat Washer, 1 1/2"
- (4) Bolt, 7/8-14UNFx5.5, GR5 w/Locknut
- (2) Bolt, 7/8-14UNFx9.5, GR8 w/Locknut
- (2) Bolt 7/8-14UNFx7.5, GR8 w/Locknut



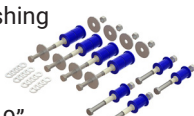
**Watson Chalin:** SRK64

## KT93-25K16

### Rebuild/Maintenance Kit

**Contains:**

- (4) PB93-26931 Pivot Bushing
- (4) PL1118 Torque Rod Bushings
- (8) Liners
- (8) Washer, .78"X3.25"X.19"
- (20) Washer, Flat 3/4" SAE, Hardened
- (4) Bolt, 3/4-16UNF x 7", GR 8
- (4) Bolt, 3/4-16UNF x 5", GR 8
- (8) Locknut, 3/4-16UNF



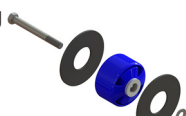
**Watson Chalin:** SRK16

## PB99-36201

### Pivot Bushing Kit, Narrow

**Contains:**

- (1) PB99-36522 Bushing
- (2) Polymer Shims
- (1) Bolt-7/8-9UNC x 8.0, GR 8, Zinc
- (1) Flat Washer
- (1) Locknut



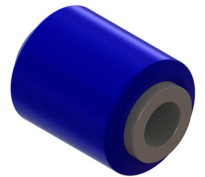
**Meritor:** A1225N1522 (Bushings only), KIT11201, KIT11350

## SU99-39113

### Pivot Bushing

**ID:** .89"  
**OD:** 2.27"  
**LG:** 3"

**Meritor:** A1225-L-1416, A1225-G-1437



# Suspension

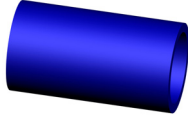
## HU10000

### Trunnion Bushing

ID: 4"  
OD: 5"  
LG: 9 1/8"

Holland: 11357-00,  
890-00, T5711

Meritor: R305217, R305216, R307455

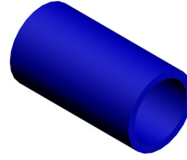


## HU10065

### Trunnion Bushing (Severe Duty)

ID: 4"  
OD: 5"  
LG: 9 1/8"

Holland: 11357-00,  
890-00, T5711

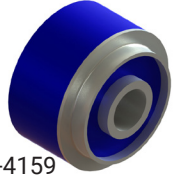


## MS99-39159

### Vibration Mount

ID: 5/8"  
OD: 2 1/4" Large  
1 13/16" Small  
H: 1.4" Large  
1" Small

Carrier Corporation: 20-91-4159  
Thermo King: 91-4159, 91-2618

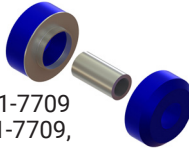


## MS99-39709

### Vibration Mount

ID: 5/8"  
OD: 2 1/2"

Carrier Corporation: 20-91-7709  
Thermo King: 91-2578, 91-7709,  
91-1404

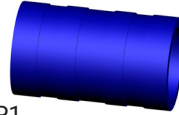


## PL1004

### Trunnion Bushing

ID: 3 15/16"  
OD: 4 15/16"  
LG: 8 3/8"

Fruehauf: UXA-000160,  
UXA-0160, UXA-000160SP1  
Meritor: R303579, R308663

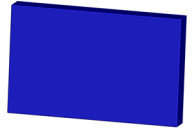


## PL1005

### Spring Pad

LG: 7 9/16"  
WD: 4 5/8"  
TK: 1"

Fruehauf: UCD-5635-001,  
UCD-005635001  
Meritor: E3582, R308664, R303582  
Rockwell: 303582  
Watson Chalin: SP-0039

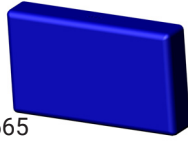


## PL1007

### Spring Pad

LG: 5"  
WD: 2 7/8"  
TK: 13/16"

Hutchens: 814-00  
Meritor: R305227, R308665

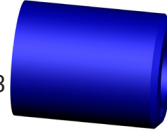


## PL1019

### Hinge Bushing

ID: 1 9/16" to 1 7/8" tapered  
OD: 3 1/2"  
LG: 4 1/2"

Meritor: R303579, R308663  
Premier: 344, 344A,  
10000952

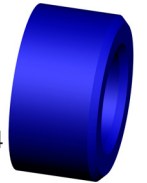


## PL1020

### Hinge Bushing

ID: 2"  
OD: 3 7/16"  
H: 1 13/16"

Meritor: R307516  
Premier: 448, 448A, 10001004

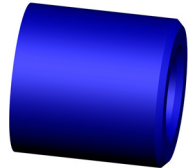


## PL1021

### Drawbar Eye Bushing

ID: 2"  
OD: 3 1/2"  
LG: 3 5/8"

Meritor: R307517  
Premier: 348, 348A,  
10000856

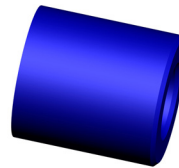


## PL1022

### Eye Bushing

ID: 2 1/2"  
OD: 4 3/4"  
LG: 5 3/16"

Meritor: R307524  
Silver Eagle: R-205,  
SV10004, 1157, 12171

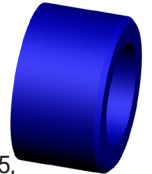


## PL1023

### Eye Bushing

ID: 2 1/2"  
OD: 3 3/4"  
H: 2 3/16"

Meritor: R307525  
Silver Eagle: R-213, SV10005,  
12169, 1595

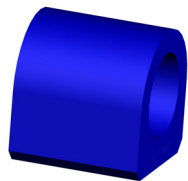


## PL1024

### Hinge Bushing

ID: 1 7/8"  
H: 3"  
WD: 2 7/8"  
LG: 2 3/4"

Meritor: R307517  
Utility Trailer: 3-1306

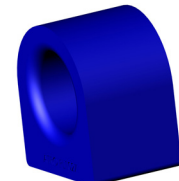


## PL1027

### Hinge Bushing

ID: 1 3/4"  
H: 2.7"  
WD: 2 15/16"  
LG: 2 1/8"

Meritor: R308656  
Western Unit: 102308

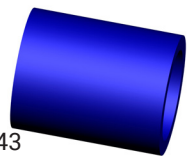


## PL1030

### Trunnion Bushing

ID: 3 7/16"  
OD: 4 9/16"  
LG: 5 3/4"

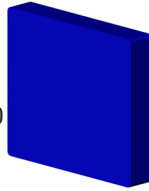
Hutchens: 11442-00  
Meritor: R302935, R307443  
Neway: 90008011



## PL1041

### Spring/Axle Pad

LG: 5 1/4"  
WD: 4 5/8"  
TK: 7/8"

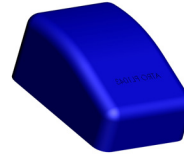


Meritor: R308670, R301330  
Neway: 91028089  
Watson Chalin: SP-0193,  
SP-0040

## PL1043

### Spring End Pad

H: 2 11/16"  
WD: 4 1/16"  
LG: 5 1/2" Large  
1 9/16" Small

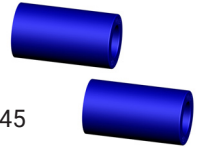


Fruehauf: 365123

## PL1050

### Spring Eye Bushing (set of 2)

ID: 7/8"  
OD: 1 1/2"  
LG: 2 3/4"

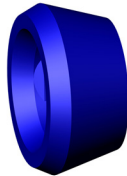


Cambria: R1011-AC  
Meritor: R307447, R309345

## PL1061

### Suspension Bushing

ID: 3"  
OD: 5 5/8" Large  
4 3/8" Small  
LG: 2 13/16"

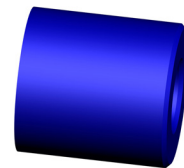


Hyster: 400329  
Meritor: R307457

## PL1079

### Drawbar Eye Bushing

ID: 2"  
OD: 4 1/2"  
LG: 4 1/2"

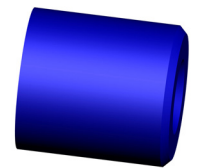


Meritor: R307518  
Premier: 437, 437A,  
10000867

## PL1080

### Drawbar Eye Bushing

ID: 2 1/16"  
OD: 4 3/4"  
LG: 5 3/16"

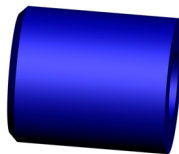


Meritor: R307645  
Premier: P205, P205A,  
10000938

## PL1081

### Hinge Bushing

ID: 2 1/2" tapered to 2.15"  
OD: 4 1/4"  
LG: 5"

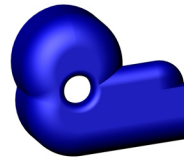


Meritor: R307519  
Premier: 434, 434A,  
10000981

## PL1082

### Spring End Boot (Left)

ID: 1"

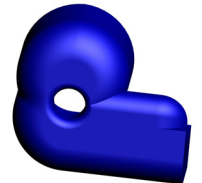


Meritor: R307526  
Silver Eagle: G-34

## PL1083

### Spring End Boot (Right)

ID: 1"

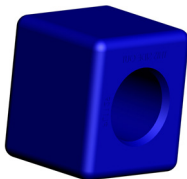


Meritor: R307526  
Silver Eagle: G-35

## PL1129

### Shock Bushing

H: 4 15/16"  
WD: 4 1/4"  
LG: 4 7/16"

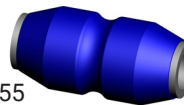


Silver Eagle: 12170

## PL1154

### Center Bushing

ID: 1 1/8"  
OD: 2 3/8"  
LG: 5"

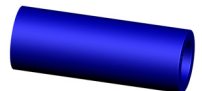


Meritor: R307485, R304255  
Neway: 90008131, 900 08 131

## PL1187

### Trailing Arm Bushing

ID: 1 1/4"  
OD: 2"  
LG: 5 1/2"

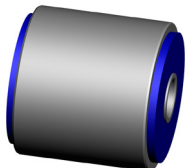


Van Raden: 3049271

## PL1188

### Drop Axle Bushing

ID: 1"  
OD: 4 1/8"  
LG: 4"

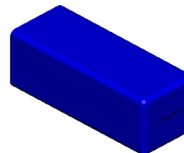


Van Raden: 3049271

## SC99-34101

### Spring Pad

H: 1 3/8"  
WD: 1 3/8"  
LG: 3 1/2"

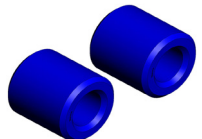


Utility Trailer: 3-5851-01

## SC99-36437

### Hinge Bushing (set of 2)

ID: 2 1/4"  
OD: 4 1/4"  
LG: 4 1/2"



Premier: 437AK,  
10000868

# Torque Rods

## TR47-41028

### Torque Rod

**LG:** 35 1/2" c-c  
**Bushings:**  
 TH47-33026/TH47-33026

**Fruehauf:** FCF-008248006



## TR53-41500

### Torque Rod, Fixed Length

**LG:** 19 1/4" c-c  
**BOLT:** 1"  
**Bushings:**  
 TH53-33100/TH53-33100

**Hutchens:** 715-00  
**Watson Chalin:** 12954



## TR53-45305

### Torque Rod, Adjustable

**LG:** 19 1/4" c-c  
**BOLT:** 1"  
**Bushings:**  
 TH53-33100/TH53-33100

**Hutchens:** 713-05,  
 1616705 (with Bushings), 16398-04,  
 1616704 (No Bushings), TR-16398-04  
**Meritor:** R303277  
**Watson Chalin:** 17015

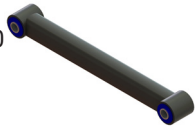


## TR83-41520

### Torque Rod, Fixed Length

**LG:** 19 7/8" c-c  
**Bushings:**  
 TH83-13000/TH83-13000

**Reyco:** 0075-20



## TR83-45520

### Torque Rod, Adjustable

**LG:** 19 7/8" c-c  
**Bushings:**  
 TH83-13000/TH83-13000

**Holland:** SP0123  
**Reyco:** 1035-20



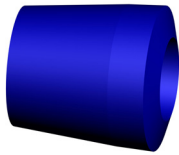
# Torque Rod Bushings

## PL1084

### Torque Rod Bushing

**ID:** 1 1/4"  
**OD:** 2 1/4" Large  
 1 13/16" Small  
**LG:** 2 5/16"

**Fruehauf:** UXA-000011  
**Hutchens:** 7620-00  
**Meritor:** R307433, R30927

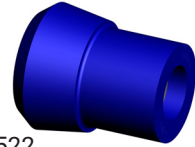


## PL1115

### Torque Rod Bushing

**ID:** 1 1/16"  
**OD:** 2 5/16" Large  
 1 13/16" Small  
**LG:** 2 11/16"  
**BOLT:** 1"

**Meritor:** R301982, R307522  
**Reyco:** T-2242

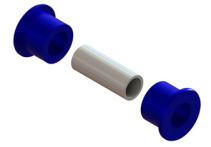


## PL1118

### Torque Rod Bushing

**ID:** 7/8"  
**OD:** 2 5/16" Large  
 1 3/4" Small  
**LG:** 3 1/8"

**Binkley:** 09729-01  
**Hendrickson:** A1712  
**Meritor:** R301980, R307520  
**Reyco:** 09729-01

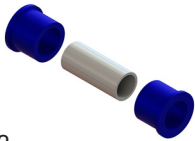


## PL1119

### Torque Rod Bushing

**ID:** 1"  
**OD:** 2" Large  
 1 3/4" Small  
**LG:** 3"

**Hutchens:** 722-00  
**Meritor:** R30934, R307453  
**Trailmobile:** 3-12-35  
**Watson Chalin:** 17012

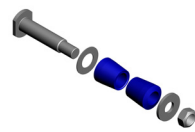


## TH47-37900

### Torque Rod Bushing Kit

**BOLT:** 1.24"  
**Contains:**  
 (2) PL1084  
 (1) Bolt  
 (2) Washers  
 (1) Locknut

**Fruehauf:** UXA-000011900



## TH53-37149

### Torque Rod Bushing Kit

**Contains:**  
 (1) PL1119 Bushing  
 (1) Bolt- 1"-14X5"  
 (1) Nut

**Hutchens:** 722-00 Bushing, NL1448  
**Trailmobile:** 700-7-149



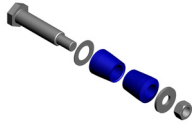
# Torque Rod Bushings

## TH53-37637

### Torque Rod Bushing Kit

**LG:** 6 1/16"  
**BOLT:** 1 1/4"

**Contains:**  
(2) PL1084  
(1) Bolt  
(2) Washers  
(1) Locknut

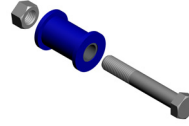


**Great Dane:** GDH7620-00 Bushing  
**Hutchens:** 7620-00 Bushing  
**Trailmobile:** 3-69-2, 7637-00

## TH83-22302

### Torque Rod Bushing Kit

**Contains:**  
(1) PL1118  
(1) Bolt 7/8"-  
9 x 5.5 UNC-2A GR5  
(1) Nut

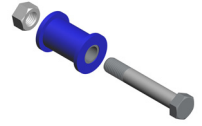


**Hendrickson:** A1712  
**Reyco:** TK7302

## TH83-37022

### Torque Rod Bushing Kit

**Contains:**  
(1) PL1118  
(1) Bolt 7/8"-  
14 x 5.5 UNF-2A  
(1) Nut

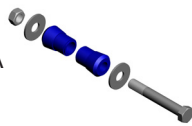


**Reyco:** 0022-01

## TH83-37997

### Torque Rod Bushing Kit

**Contains:**  
(2) PL1116  
(2) Washers  
(1) Bolt 1"-14 x 7 UNS-2A  
(1) Nut

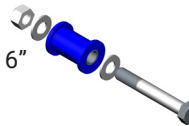


**Reyco:** TK18997

## TH99-37102

### Torque Rod Bushing Kit

**Contains:**  
(1) PL1116  
(2) Washers  
(1) Bolt 7/8"-14 GRADE 8 6"  
(1) Nut

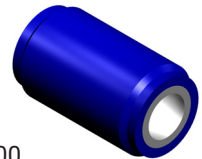


**Meritor:** KIT11102

## UB3000

### Torque Rod Bushing

**ID:** 7/8"  
**OD:** 1 3/4"  
**LG:** 3"



**Hendrickson:** A1712  
**Reyco:** 09729-01  
**TransPro:** A-1712, 0022-00

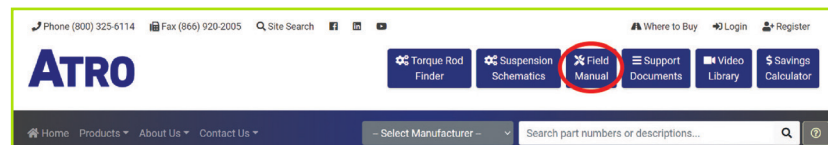
Abbreviation	Legend
ID	Internal Diameter
OD	Outside Diameter
LG	Length
WD	Width
H	Height
HO	Hole
TK	Thickness
C-C	Length Between Centers
BOLT	Bolt

## Field Manual

A valuable preventive maintenance guide from ATRO. To view the digital Field Manual follow the instructions below or scan the QR code to download a copy to your device.

**Go to [atrobushing.com](http://atrobushing.com)**

**Click on Field Manual in the upper right hand corner**



# ATRO

**Field Manual**

**Suspensions & Torque Rods**

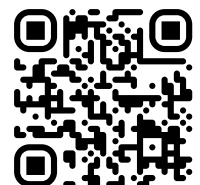
Performance that drives your success.

Featuring sections on:

- Suspension Basics
- All Suspension Inspection/Maintenance
- Leaf Spring Inspection
- Most Common & Preventable Failures
- Truck Rear Suspensions
- Trailer Suspensions
- Torque Rods

Chalmers  
Freightliner  
Hendrickson  
Hutchens  
International  
Kenworth  
Mack  
Meritor  
Neway  
Peterbilt  
Reyco  
Volvo

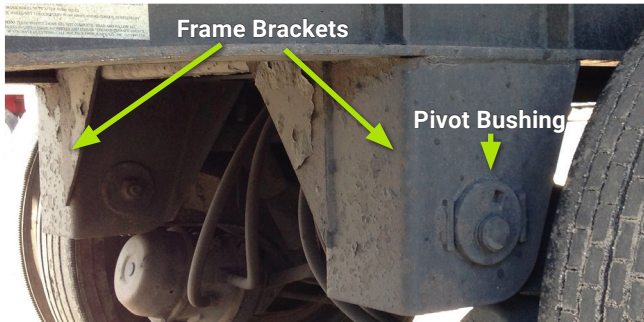
Scan QR Code to download:  
**ATRO Field Manual**



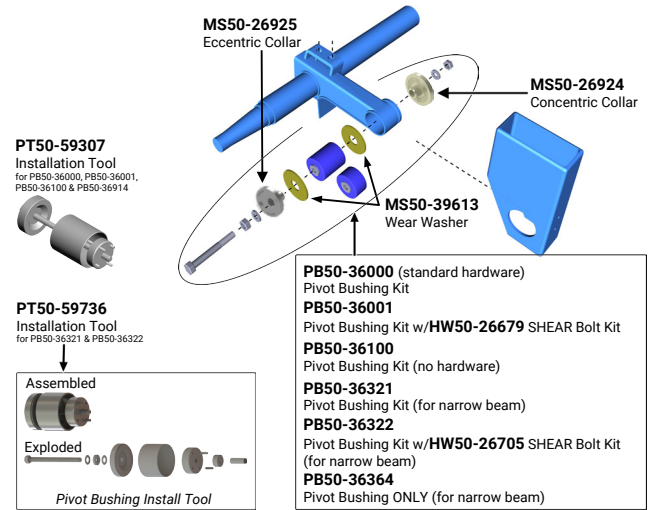
# Trailer Suspensions

## Hendrickson INTRAAX/VANTRAAX

The Intraax is an integrated trailer air suspension, axle and brake system introduced in 1995. It is widely used and can be found on platforms, tankers, dumps, grain hoppers, specialty trailers – on-highway or off-road. The Vantraax is a tandem air slider system for dry-freight, refrigerated and specialty van trailers and has been available since 1998.



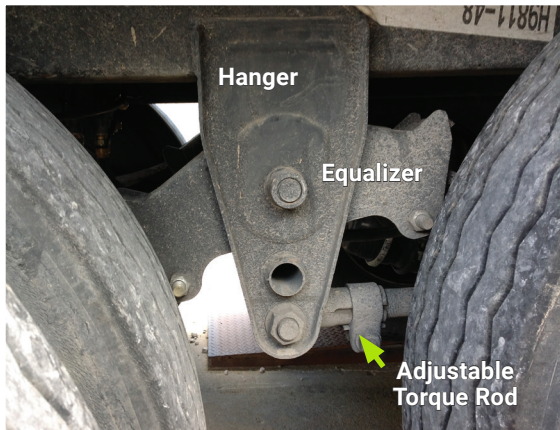
Scan QR Code to go to video:  
**ATRO Parts | Hendrickson INTRAAX®  
 VANTRAAX® Suspension**



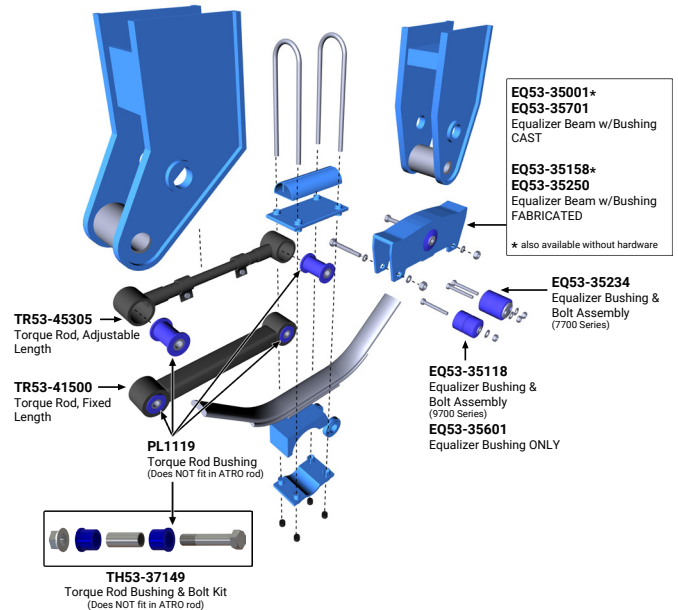
ATRO P/N	OEM Bushing	Voids	Inner Pin Rotation	Bolt Type	Hardware Included	Alignment	Install Tool	Qty/Axle
PB50-36000	S-24691	Yes	No	Hex head	Yes	Quick-Align	PT50-59307	2
PB50-36001	S-24691	Yes	No	Shear Bolt	Yes	Quick-Align	PT50-59307	2
PB50-36100	S-24691	Yes	No	n/a	Wear washers only	Quick-Align	PT50-59307	2
PB50-36321	S-26321	Yes	No	Hex head	Yes	Quick-Align	PT50-59376	1
PB50-36322	S-26321	Yes	No	Shear Bolt	Yes	Quick-Align	PT50-59376	1
PB50-36914	A-6914	Yes	No	Hex head	Yes	Welded Alignment	PT50-59307	2
PB50-36654	S-24691	Yes	No	Shear Bolt	Yes	Quick-Align	PT50-59307	1

## Hutchens 7700/9700

This traditional leaf spring trailer suspension is available in single, tandem or multi-axle configurations, overslung or underslung and is adaptable to square, round or rectangular axles. It can have cast or fabricated equalizers and hangers.



Scan QR Code to go to video:  
**ATRO Parts | Hutch Trailer  
 Suspension**

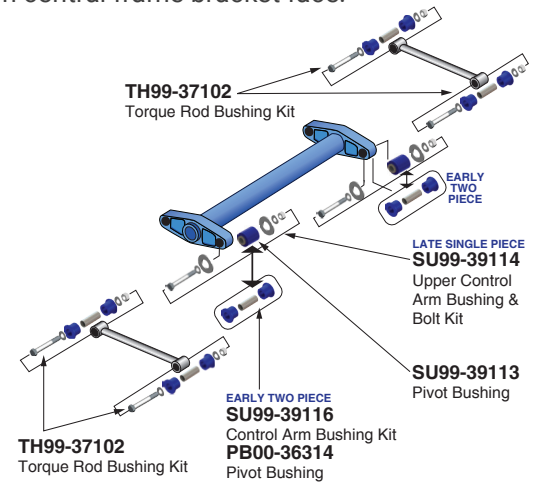


## Meritor RHP/MPA Trailer

These trailer suspensions have a parallelogram design with parallel upper and lower control arms. Both upper and lower control arms are bolted to a central V-shaped frame bracket instead of having two separate trailing arms. The air springs mount directly over the axles for a smoother ride, elimination of roll torque and to prevent dock walk. The upper control arms are held together by a torque tube designed to control lateral roll. Approved applications include pup trailers, dry van and refrigerated van.

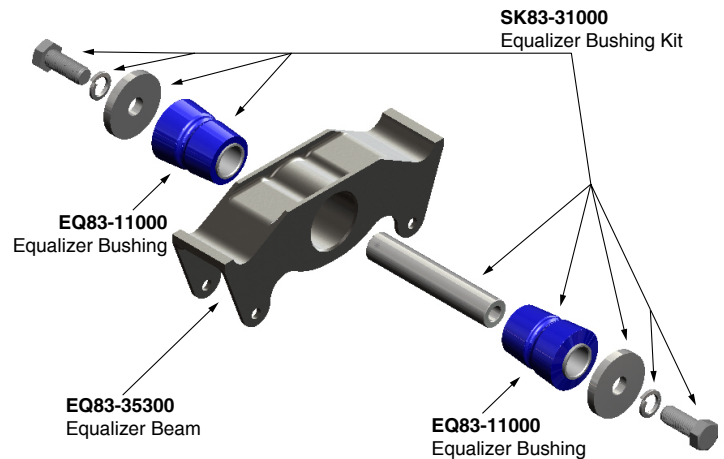
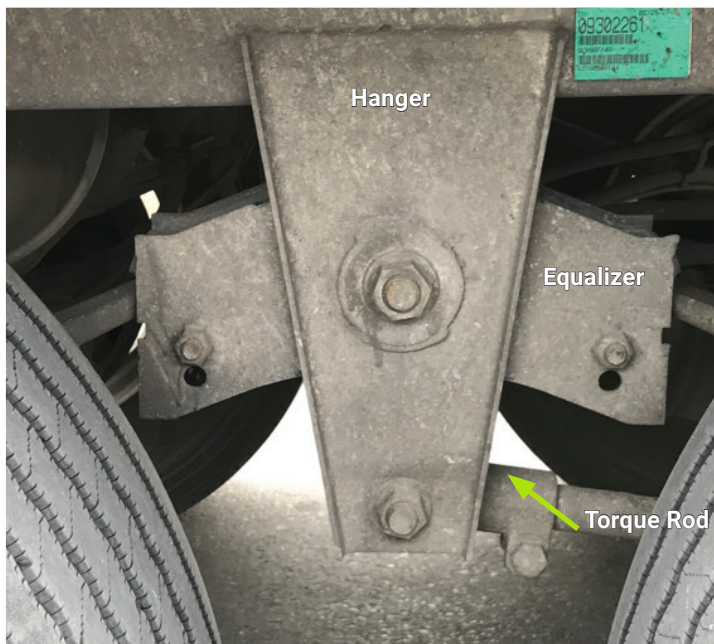
### Identification

- RHP, manufactured through 2007, has solid face on frame bracket.
- MPA (Ride Sentry), produced 2007/2008 through current has open triangle on central frame bracket face.



## Reyco 21B

This 4-spring trailer suspension for heavy-duty applications including tankers, low beds, rear/belly/side-dumps, flat decks and platforms. Polyurethane equalizer bushings (and kits) provide chemical resistance and better wear/abrasion resistance than rubber. This results in extended bushing life.



# ATRO



- ATRO polyurethanes are 3-5 times stronger than rubber.
- Resistant to oils, grease, road salt, and other chemicals.
- Specific compounds optimize the performance of each part.



## Contact Us

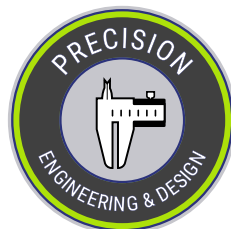
Phone: (800) 325-6114

Fax: (866) 920-2005

Email: [customerservice@atrobushing.com](mailto:customerservice@atrobushing.com)

Website: [www.atrobushing.com](http://www.atrobushing.com)

**ATRO, LLC**  
6 Bolte Lane  
St. Clair, MO 63077 USA



**ATRO Parts. Performance that drives your success.**

ATRO, LLC | 6 Bolte Lane | St. Clair, MO 63077 USA | Phone (800) 325-6114

[www.atrobushing.com](http://www.atrobushing.com)

© 2024 ATRO, LLC