

MAY 11, 2020

PRODUCT SPOTLIGHT

CR00-67661

Carrier Bearing Assembly, Self-Aligning

Bearing Angular Allowance: +/-10 degrees

Series 1810

REPLACES

Dana-Spicer 10094142

Dana-Spicer 5003323

DIMENSIONS

ASSEMBLY:

Height: 7-5/8"

Width: 3-3/4"

Length: 10"

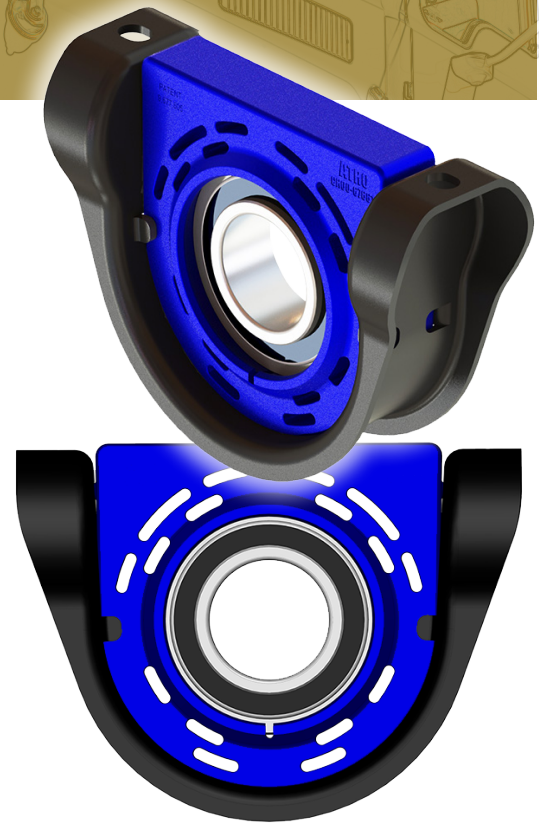
BEARING:

Bearing ID: 60mm

Center Height: 3-3/8"

Bolt Holes: 8 5/8" c-c

Bolt Size: 1/2"



FEATURES & BENEFITS

► Polyurethane

- ◆ Chemically Resistant
- ◆ Vibration Absorbing

► Patented Pivoting Bearing

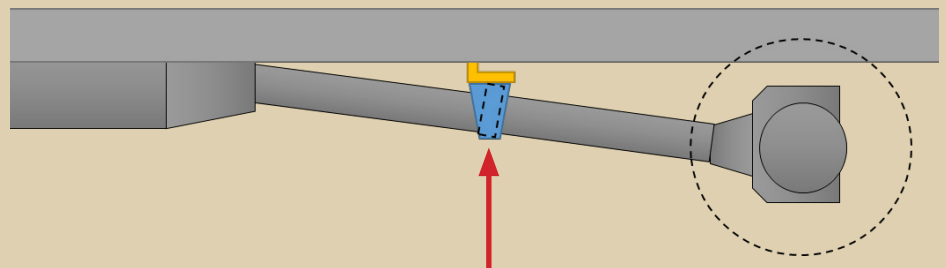
- ◆ $\pm 10^\circ$ of Articulation
- ◆ Sealed
 - Prevents Contamination
 - Retains Lubricant

► Heavy Duty Steel Housing

- ◆ 7 Gauge Steel



Importance of the Self-Aligning Feature



With the ATRO self-aligning carrier bearing assembly, there is no need to shim because the center is allowed to pivot + or - 10 degrees.*

This saves money and time on the installation ... less parts plus no need to be as precise due to the range of articulation provided by the new carrier bearing.

* Proper driveline angle must be maintained.

PS001-051220rev112520

ATRO
ENGINEERED SYSTEMS

**WITH ATRO BEHIND YOU,
DRIVE FORWARD.**

SUSPENSION » TORQUE ROD » TRAILER » UNDERHOOD

6 Bolte Lane
St. Clair, Missouri 63077 | U.S.A.
(800) 325.6114 | Fax (866) 920.2005
www.atrobushing.com

©2020 ATRO ENGINEERED SYSTEMS, INC.