

# PRODUCT ANNOUNCEMENT

**ATRO PARTS**

ENGINEERED | DURABLE | RELIABLE  
MANUFACTURED IN ST. CLAIR, MISSOURI | U.S.A.

## MERITOR RFS23T/RFS25T/RFS30T

The Meritor RFS Series suspension is used in specialized vocational markets such as flatbeds, tankers, auto haulers and lowboy trailers.

### PB99-36522

#### Pivot Bushing, Narrow

**Application:** RFS23T

**Meritor** A1225N1522

**Dimensions:**

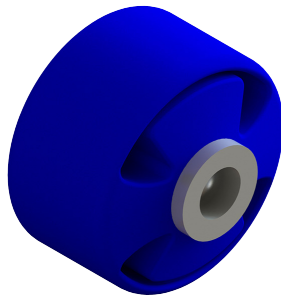
Width: 4 3/4"

Inner Diameter: 7/8"

Outer Diameter: 5 15/16"

**Qty Per Axle:** 2

**UPC Code:** 751354039092



### PB99-36201

#### Pivot Bushing Kit, Narrow

**Application:** RFS23T

**Meritor** KIT11201

**Contains:**

(1) PB99-36522 Bushings

(2) Polymer Shims

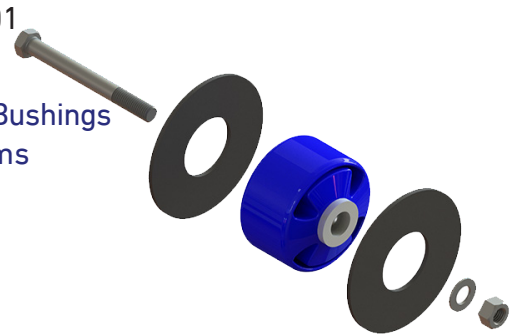
(1) Bolt

(1) Flat Washer

(1) Locknut

**Qty Per Axle:** 2

**UPC Code:** 751354039078



### PB99-36537

#### Pivot Bushing, Wide

**Application:** RFS25T/RFS30T

**Meritor** 21227380

**Meritor** 21230539

**Meritor** A1225C1537

**Meritor** A-1225-C-1537

**Dimensions:**

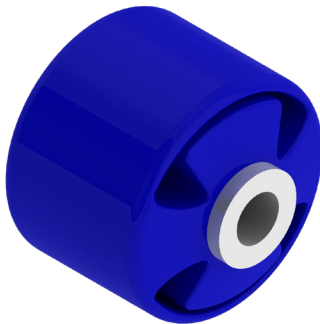
Width: 5 3/4"

Inner Diameter: 7/8"

Outer Diameter: 5 15/16"

**Qty Per Axle:** 2

**UPC Code:** 751354039108



### PB99-36205

#### Pivot Bushing Kit, Wide

**Application:** RFS25T/RFS30T

**Meritor** KIT11205

**Meritor** KIT11214

**Contains:**

(1) PB99-36537 Bushings

(2) Polymer Shims

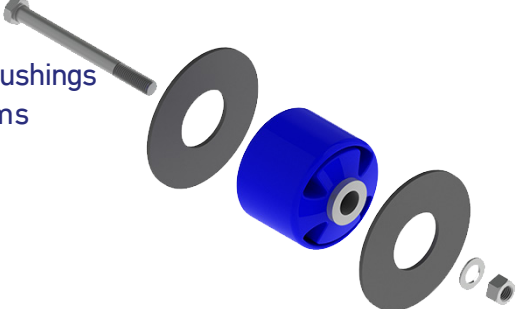
(1) Bolt

(1) Flat Washer

(1) Locknut

**Qty Per Axle:** 2

**UPC Code:** 751354039085



# ATRO POLYURETHANES

**ATRO PARTS**  
ENGINEERED | DURABLE | RELIABLE  
MANUFACTURED IN ST. CLAIR, MISSOURI | U.S.A.

## KEY FEATURES: *The ATRO Difference*

ATRO maintains 11 proprietary formulations, ATRO Polys, each having unique physical properties to optimize performance. Whether absorbing a shock or transferring energy, ATRO is engineered to function based on the demands of the part. ATRO provides polyurethane parts and solutions for heavy trucks.

## WHAT MAKES **ATRO PARTS** DIFFERENT ...

### ***The Material***

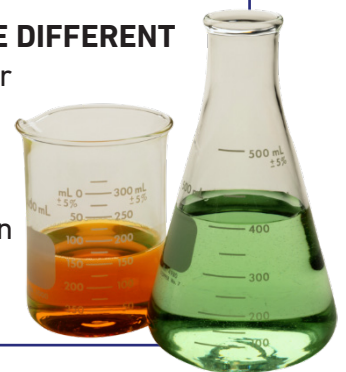


#### **11 PROPRIETARY ATRO POLY FORMULAS**

Upon evaluation of the application and the purpose/function of the part, ATRO will determine which specifically formulated poly. ATRO meets or exceeds OE specs, matches or improves ride performance.

#### **POLYURETHANES ARE DIFFERENT**

- Ranging Durometer
- Tensile Strength
- Tear Strength
- Compression Set
- Ultimate Elongation
- Rebound



### ***ATRO Polyurethane is better than Rubber***

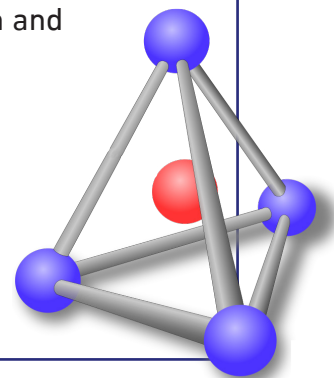


#### **STRONGER MATERIAL**

- ATRO Polys are specifically engineered to the function of the part providing added durability and reliability to the suspension.
- ATRO Polys absorb energy, some deflect energy. Some maintain higher rebound or greater compression. Each part engineered for purpose and functionality.
- Rubber primarily maintains one set of properties.
- ATRO Polys maintains at least 2x or greater tensile and tear strength and 2x the elongation vs. rubber.

#### **CHEMICALLY RESISTANT**

- ATRO Polys are impervious to oil, grease, brine, cleaning solvents, hydraulic fluids and diesel fuel.
- Rubber deteriorates in similar conditions.



CELEBRATING 30 YEARS  
**ATRO**  
POLYURETHANE • SOLUTIONS

POLYURETHANE PARTS | SOLUTIONS FOR HEAVY TRUCKS

ATROBUSHING.COM  
©2017 ATRO ENGINEERED SYSTEMS, INC.

6 Bolte Lane  
St. Clair, Missouri 63077 | U.S.A.  
(800) 325.6114 | Fax (866) 920.2005