

Product Announcement

Aftermarket Replacements Parts from ATRO®

ATRO® is an ISO 9001 Registered Manufacturer of Polyurethane Components for the Truck, Bus and Trailer Industry

CM99-61800 Cab Mount/Isolator

Replaces:

Kalmar/Cargotec #90021800

Contains:

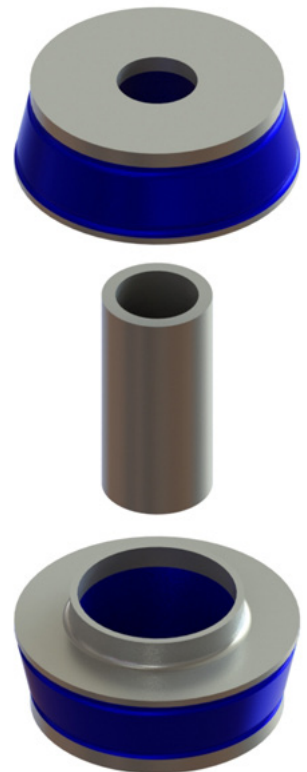
- (2) Cab Mounts
- (1) Spacer Sleeve

Mount Dimensions:

ID: 5/8"

OD: 2 1/4"

Height: 13/16"



**ISO 9001:2008
REGISTERED**

NFS International Strategic Registrations

DISTRIBUTED BY



1250 Airport Road, Sullivan, Missouri 63080 USA
(800) 325-6114 • Fax (573) 860-8401

www.atrobushing.com

©2014 ATRO ENGINEERED SYSTEMS, INC.

ATRO is not liable for any errors herein. All manufacturers' names and part numbers used are trademarked by the respective manufacturer. These names and part numbers are being used without permission. No endorsement, affiliation or recommendation is implied. They are included for reference purposes only. Some products shown here are covered by Canadian Patent 1,327,979; Australian Patent 630,358.

PA011-080414_CM99-61800